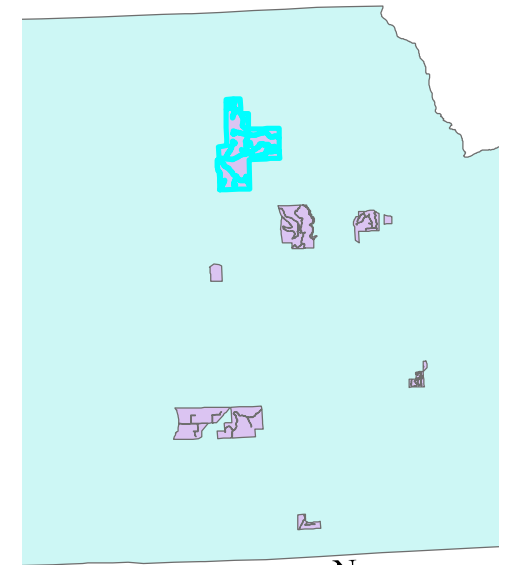
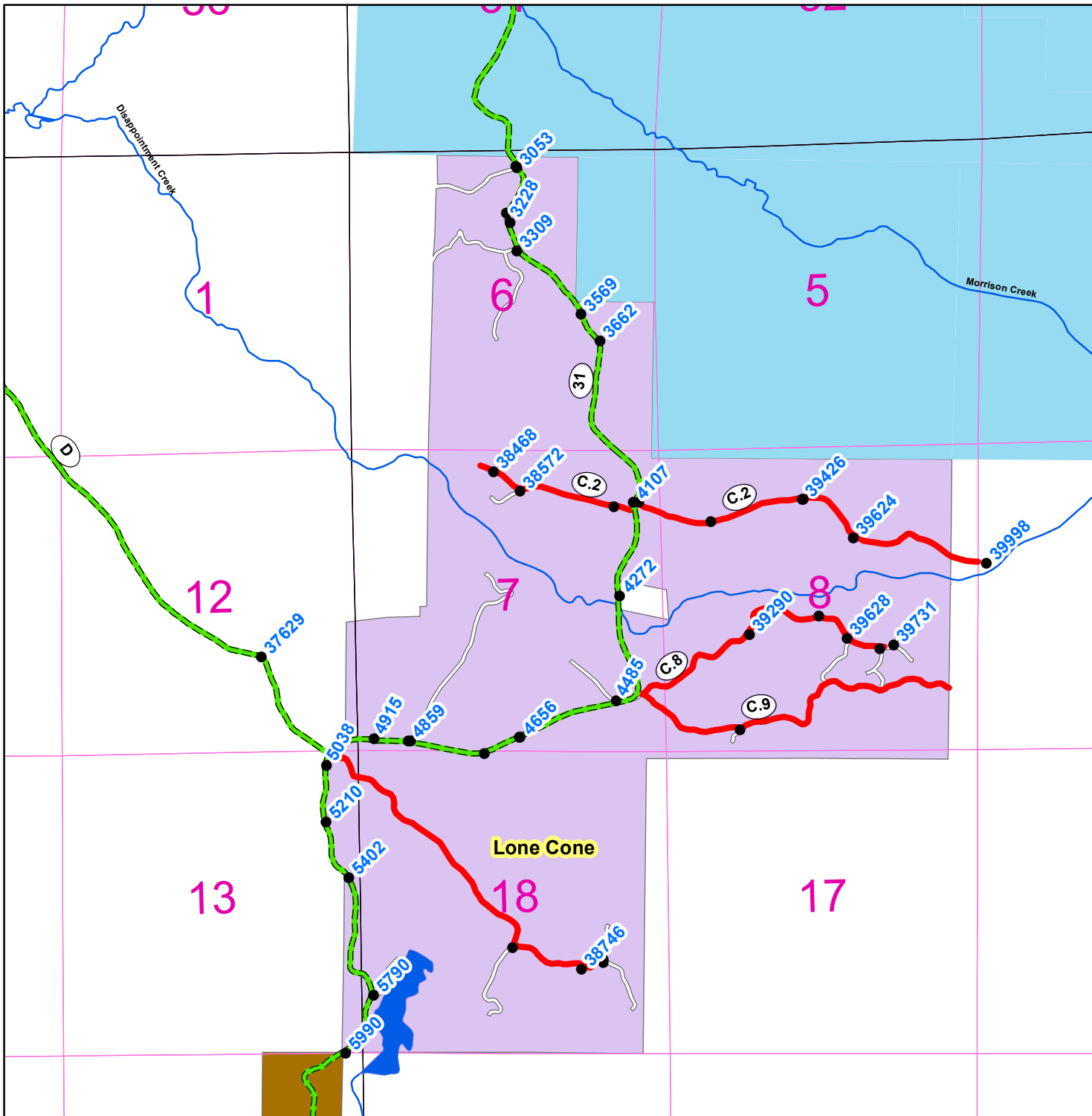


# Lone Cone Subdivision Addresses & Private Roads



Legend	
● Address	<b>Sign</b>
<b>Road Surface</b>	<b>Sign</b>
<b>Type</b>	<b>Sign</b>
— Chipsealed/Paved	— Dolores County
— Gravel	— Non-Dolores County Owned or Maintained
— Graded Dirt	— Non-Dolores County Jurisdiction
— Primitive/Unimproved	— City Maintained
	— Highway/CDOT
	— DoloresCounty_Subdivisions
<b>Road Sign</b>	

Created by the Dolores County  
Addressing & Mapping Department.