



February 10, 2021

JSI Construction Group LLC
1710 29th Street, Suite 1068
Boulder, Colorado 80301

Attn: Mr. Brian Kirtland, P.E.
P: (720) 838-2327
E: BKirtland@juwiamericas.com

Re: Pile Load Test Report
Dolores Canyon Solar Project
County Road M.9
Cahone, Colorado
Terracon Project No. 61205151

Dear Mr. Kirtland:

At the request of JSI Construction Group LLC (JSI), Terracon Consultants, Inc. (Terracon) has prepared this letter to report the results of the driven W-Section and C-Section pile axial (compression and tension) and lateral tests. Terracon prepared a Geotechnical Engineering Report for the project, Project No. 61195223 dated June 29, 2029.

TEST RESULTS

On August 25 to September 4 and September 14 to 16, 2020, C8x3 and W8x10 steel test piles were driven and tested for axial and lateral capacity at 60 locations across the site. Sunflow Solar Structures installed the piles using a GAYK HRE4000 pile driver equipped with a 300-pound hammer. The locations of the test piles are shown on Exhibits A-2 and A-3. The piles were embedded at various depths to attempt to achieve passing results.

Based on Work Order No. 002 provided by JSI, the loading criteria for the Bearing and Drive piles are as follows:

200' Bearing Post (Exterior)	Design Load with Safety Factor of 2 (kips)	Allowable Deflection (in.)
Down Load (Compression):	-8	0.75
Uplift Load (Tension):	1.7	0.75
Lateral Load based on 4' Lever Arm:	2.25	3.0 (Elastic) / 0.75 (Plastic)

200' Bearing Post (Interior)	Design Load with Safety Factor of 2 (kips)	Allowable Deflection (in.)
Down Load (Compression):	-9.5	0.75
Uplift Load (Tension):	0.74	0.75
Lateral Load based on 4' Lever Arm:	1.375	3.0 (Elastic) / 0.75 (Plastic)

200' Drive Post (Exterior)	Design Load with Safety Factor of 2 (kips)	Allowable Deflection (in.)
Down Load (Compression):	-7	0.75
Uplift Load (Tension):	1.5	0.75
Lateral Load based on 4' Lever Arm:	6	3.0 (Elastic) / 0.75 (Plastic)

200' Drive Post (Interior)	Design Load with Safety Factor of 2 (kips)	Allowable Deflection (in.)
Down Load (Compression):	-7	0.75
Uplift Load (Tension):	0.539	0.75
Lateral Load based on 4' Lever Arm:	4	3.0 (Elastic) / 0.75 (Plastic)

All tests were loaded to approximately the design load listed above. The accuracy of the load being applied was dependent on the equipment being used to apply the load. The testing procedure did not include cyclic testing, per the client direction. This should be considered during design of foundations systems. Axial loads were applied utilizing a trackhoe and measured using a Dillon ED Junior 10-kip load cell, provided by the contractor. Axial tension tests were conducted up to required loading or the deflection limit. Deflections were measured using dial gauges provided by the Terracon, and in general accordance with measurement locations specified in the Work Order No. 002 provided by JSI and dated August 21, 2020. Total deflections observed consist of the summation of the elastic and plastic deformations that are presented in the appendices.

For lateral tests, loads were applied using the excavator and the Dillon ED Junior 10 kip load cell, both provided by the contractor. Deflection values were measured at points on the pile located approximately 48 inches above grade and 6 inches above grade. A dial gauge was used for the ground level deflection measurement and a tape measure was used to record deflections at 4 feet above the ground surface. Loads ranged from 2.0 to 8.3 kips due to less precise nature of using this type of equipment to apply the load.

All but two test locations met JSI test requirements at six foot or shallower (refusal) embedment's. Shallow embedment's, due to pile refusal, were tested to JSI requirements and met required capacities. These locations are shown in the table below.

Test Location	Pile Type	Embedment (feet)	Interior Drive	Exterior Drive
PT 5-6	W8x10	4.5	Pass	Pass
	C8	4.5	Pass	Pass
PT-4-6	W8x10	5.9	Pass	Pass

Terracon consulted with JSI on potential for frost heave and it was determined the risk was negligible. Test failures occurred in lateral tests conducted on W8x10 piles at six-foot embedment's. Piles were driven to seven feet and re-tested. Lateral test failures are summarized below.

Lateral Test Failure Summary

Test Location	Pile Type	Embedment (feet)	Interior Drive	Exterior Drive
PT 2-1	W8x10	6	Pass	Fail
	W8x10	7	Pass	Pass
PT-2-3	W8x10	6	Pass	Fail
	W8x10	7	Pass	Pass

GENERAL COMMENTS

The scope of the services performed for this project included data acquisition during the pile load testing. The test methods and procedures were provided by juwi. The test equipment was provided by Sunflow except for the dial gauges, which were provided by Terracon. Terracon's scope of services included observation of the pile testing and collection of data during the tests. Terracon has not performed any interpretation of the test data. The data presented in this report is based upon the pile locations observed and described test procedures. This report does not reflect variations that may occur between test locations, across the site, or due to the modifying effects of construction or weather. The nature and extent of such variations may not become evident until or after construction.

The scope of services for this project does not include either specifically or by implication any environmental or biological (e.g., mold, fungi, bacteria) assessment of the site or identification or prevention of pollutants, hazardous materials or conditions. If the owner is concerned about the potential for such contamination or pollution, other studies should be undertaken.

This data report has been prepared for the exclusive use of our client for specific application to the project discussed. No warranties, either express or implied, are intended or made. In the event that changes in the nature, design, or location of the project as outlined in this report are planned, the data contained in this report shall not be considered valid unless Terracon reviews the changes and either verifies or modifies the conclusions of this report in writing.

We appreciate the opportunity to be of service to you on this project. If you have any questions concerning this report, or if we may be of further service, please contact us.

Sincerely,
Terracon Consultants, Inc.

Charles V. Molthen, P.E. (UT)
Department Manager I

Scott B. Myers, P.E.
Senior Regional Consultant

ATTACHMENTS

- Appendix A – Site and Test Pile Location Plans**
- Appendix B – Pile Load Test Data**

Copies: Addressee (Electronic)

SITE LOCATION

JSI - Dolores Canyon Solar Project PLT ■ Cahone, CO
October 26, 2020 ■ Terracon Project No. 61205151

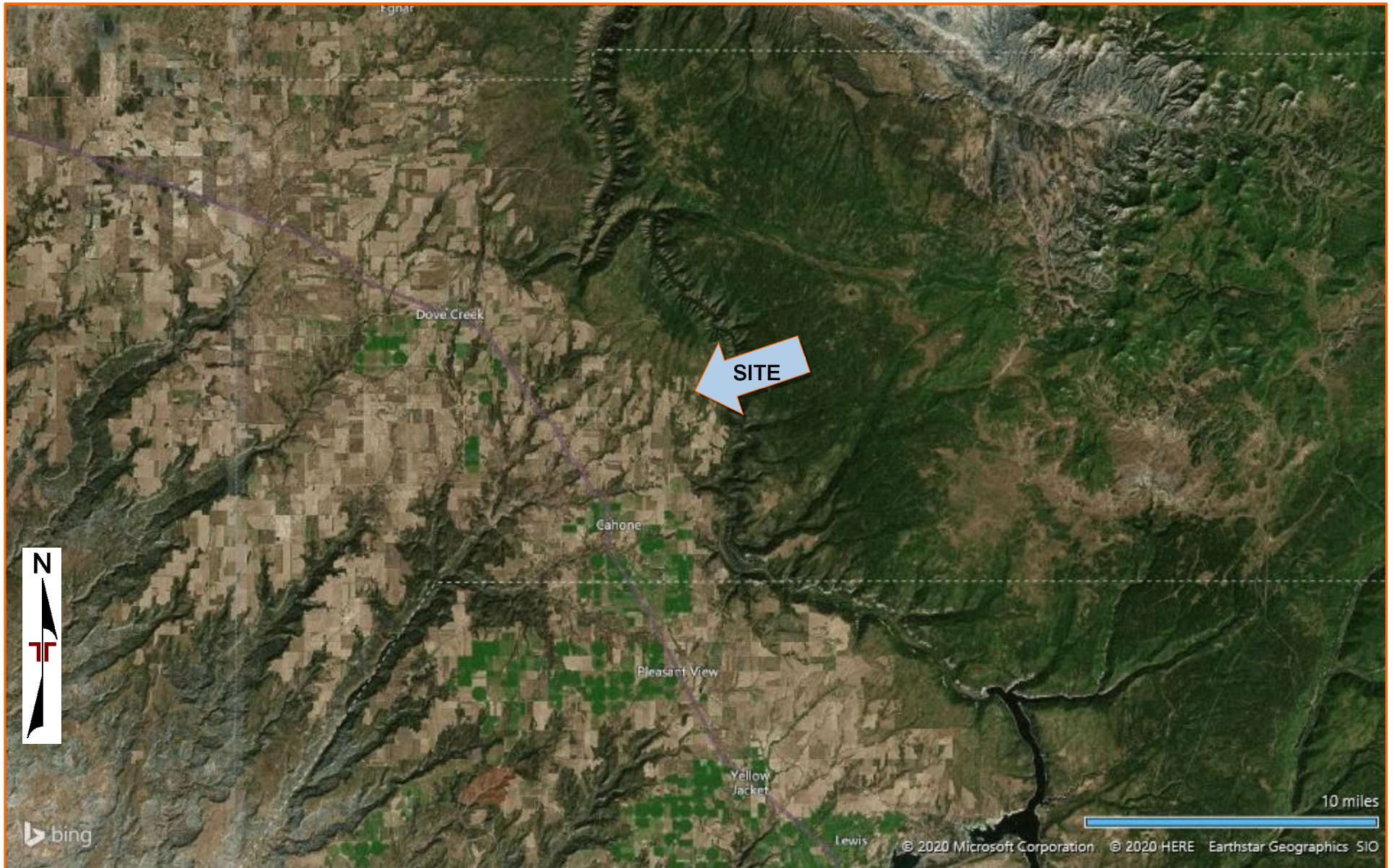


DIAGRAM IS FOR GENERAL LOCATION ONLY, AND IS NOT INTENDED FOR CONSTRUCTION PURPOSES

TOPOGRAPHIC MAP IMAGE COURTESY OF THE U.S. GEOLOGICAL SURVEY
QUADRANGLES INCLUDE: CAHONE, CO (1/1/1994) and DOE CANYON, CO (1/1/1993).

PILE LOCATION PLAN

JSI - Dolores Canyon Solar Project PLT ■ Cahone, UT
October 26, 2020 ■ Terracon Project No. 61205151

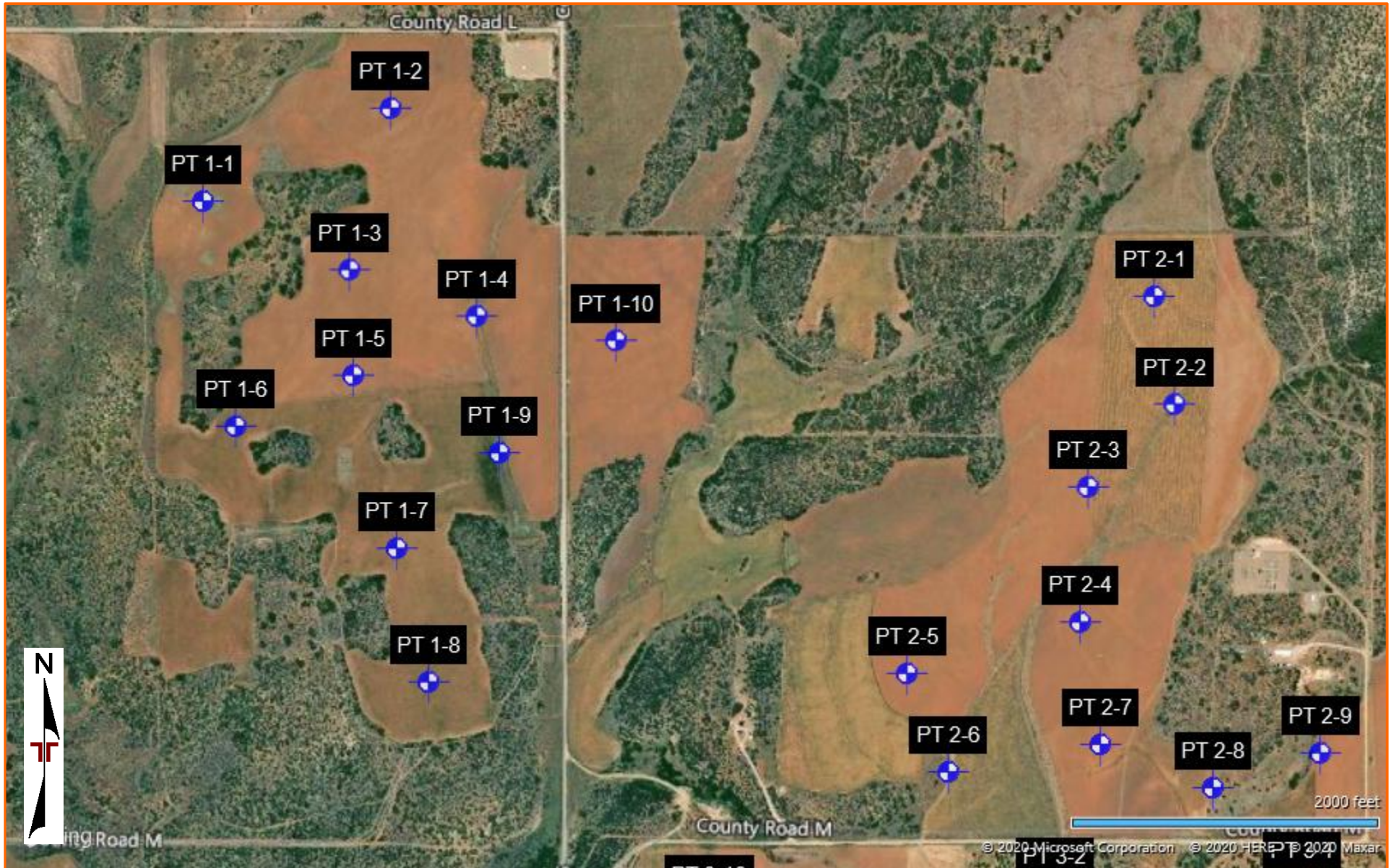


DIAGRAM IS FOR GENERAL LOCATION ONLY, AND IS NOT INTENDED FOR CONSTRUCTION PURPOSES

AERIAL PHOTOGRAPHY PROVIDED BY MICROSOFT BING MAPS

PILE LOCATION PLAN

JSI - Dolores Canyon Solar Project PLT ■ Cahone, UT
October 26, 2020 ■ Terracon Project No. 61205151

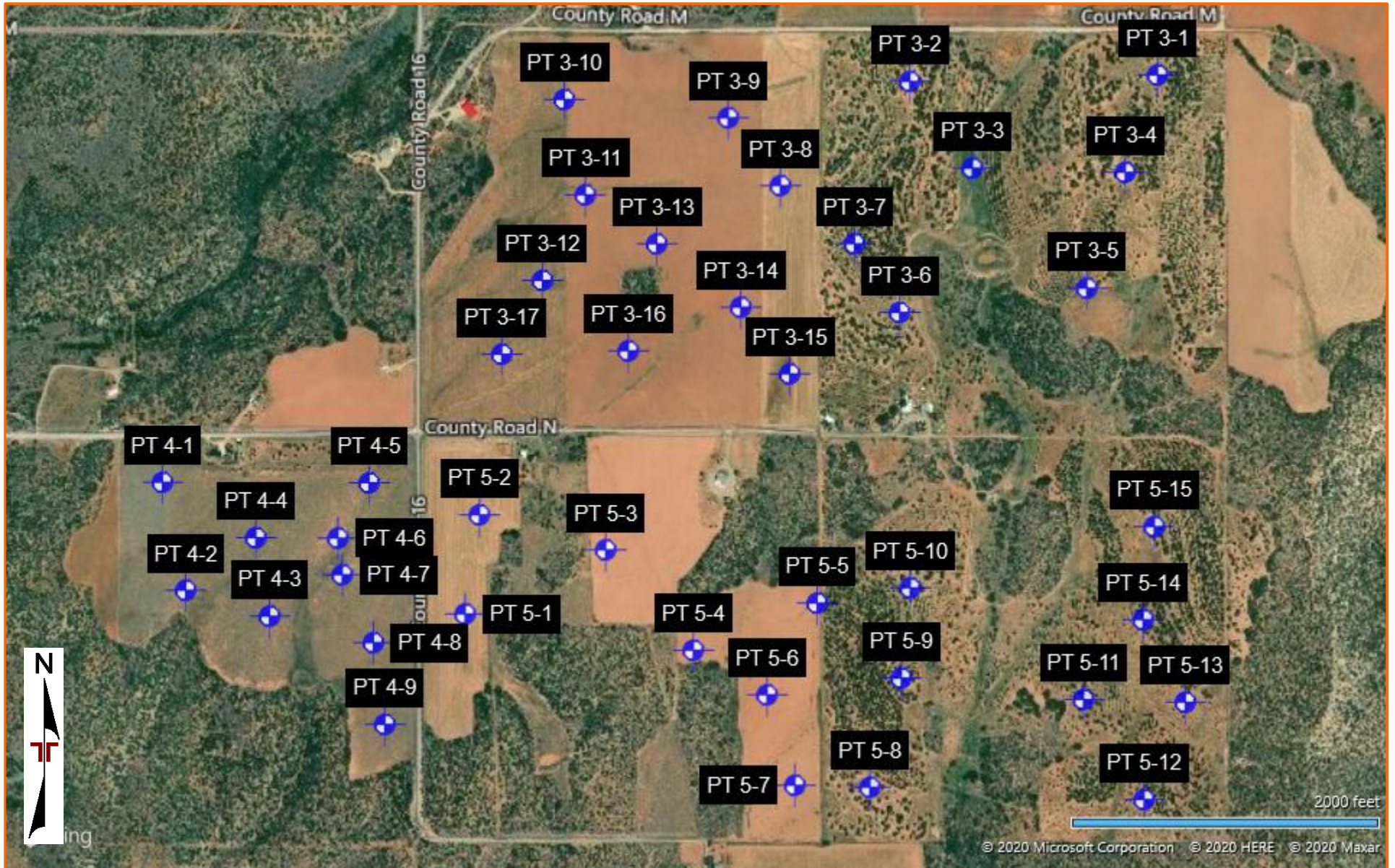


DIAGRAM IS FOR GENERAL LOCATION ONLY, AND IS NOT INTENDED FOR CONSTRUCTION PURPOSES

AERIAL PHOTOGRAPHY PROVIDED BY MICROSOFT BING MAPS



Pile Load Testing

Project: Dolores Canyon
 Project Number: 61205151

Terracon Rep: S.F. Paroski
 Location No.: PT 1-1
 Date: 8/25/2020

Pile Size: W8x10
 Driven Depth (in.): 72
 Time to Drive (sec.): 42

Load: Trackhoe

Axial Load Test			Lateral Load Test			
Axial Load Test (-Compression) (+Tension) (kip)	Elastic Deflection Δ (inches)	Plastic Deflection Δ (inches)	Lateral Load (kip)	Elastic Deflection Δ (inches)	Plastic Deflection Δ (inches)	Lateral Gage Position: (inches above grade)
-4.06	0.000	0.000	4.15	0.750		48
-7.51	0.031	0.000		0.250		~6
0.87	0.000	0.000	6.68	1.000	0.000	48
1.73	0.000	0.000		0.500	0.000	~6
Notes:			Notes:			

Terracon Rep: S.F. Paroski
 Location No.: PT 1-1
 Date: 8/25/2020

Pile Size: C8
 Driven Depth (in.): 72
 Time to Drive (sec.): 36

Load: Trackhoe

Axial Load Test			Lateral Load Test			
Axial Load Test (-Compression) (+Tension) (kip)	Elastic Deflection Δ (inches)	Plastic Deflection Δ (inches)	Lateral Load (kip)	Elastic Deflection Δ (inches)	Plastic Deflection Δ (inches)	Lateral Gage Position: (inches above grade)
-5.67	0.021	0.000	1.34	0.500		48
-9.70	0.021	0.000		0.000		~6
1.13	0.000	0.000	2.63	0.750	0.000	48
1.87	0.000	0.000		0.250	0.000	~6
Notes:			Notes:			



Pile Load Testing

Project: Dolores Canyon
 Project Number: 61205151

Terracon Rep: S.F. Paroski
 Location No.: PT 1-2
 Date: 8/25/2020

Pile Size: W8x10
 Driven Depth (in.): 72
 Time to Drive (sec.): 30

Load: Trackhoe

Axial Load Test			Lateral Load Test			
Axial Load Test (-Compression) (+Tension) (kip)	Elastic Deflection Δ (inches)	Plastic Deflection Δ (inches)	Lateral Load (kip)	Elastic Deflection Δ (inches)	Plastic Deflection Δ (inches)	Lateral Gage Position: (inches above grade)
-5.02	0.000	0.000	4.34	0.750		48
-7.50	0.031	0.000		0.250		~6
0.78	0.000	0.000	6.31	1.000	0.250	48
1.66	0.000	0.000		0.250	0.000	~6
Notes:			Notes:			

Terracon Rep: S.F. Paroski
 Location No.: PT 1-2
 Date: 8/25/2020

Pile Size: C8
 Driven Depth (in.): 72
 Time to Drive (sec.): 34

Load: Trackhoe

Axial Load Test			Lateral Load Test			
Axial Load Test (-Compression) (+Tension) (kip)	Elastic Deflection Δ (inches)	Plastic Deflection Δ (inches)	Lateral Load (kip)	Elastic Deflection Δ (inches)	Plastic Deflection Δ (inches)	Lateral Gage Position: (inches above grade)
-4.79	0.000	0.000	1.34	0.250		48
-9.66	0.045	0.000		0.000		~6
0.75	0.000	0.000	2.29	0.750	0.000	48
1.92	0.000	0.000		0.000	0.000	~6
Notes:			Notes:			



Pile Load Testing

Project: Dolores Canyon
 Project Number: 61205151

Terracon Rep: S.F. Paroski
 Location No.: PT 1-3
 Date: 8/25/2020

Pile Size: W8x10
 Driven Depth (in.): 72
 Time to Drive (sec.): 26

Load: Trackhoe

Axial Load Test			Lateral Load Test			
Axial Load Test (-Compression) (+Tension) (kip)	Elastic Deflection Δ (inches)	Plastic Deflection Δ (inches)	Lateral Load (kip)	Elastic Deflection Δ (inches)	Plastic Deflection Δ (inches)	Lateral Gage Position: (inches above grade)
-4.78	0.000	0.000	4.25	0.750		48
-7.46	0.000	0.000		0.000		~6
0.97	0.000	0.000	6.48	1.250	0.000	48
1.60	0.000	0.000		0.500	0.000	~6
Notes:			Notes:			

Terracon Rep: S.F. Paroski
 Location No.: PT 1-3
 Date: 8/25/2020

Pile Size: C8
 Driven Depth (in.): 72
 Time to Drive (sec.): 24

Load: Trackhoe

Axial Load Test			Lateral Load Test			
Axial Load Test (-Compression) (+Tension) (kip)	Elastic Deflection Δ (inches)	Plastic Deflection Δ (inches)	Lateral Load (kip)	Elastic Deflection Δ (inches)	Plastic Deflection Δ (inches)	Lateral Gage Position: (inches above grade)
-5.33	0.000	0.000	1.35	0.750		48
-9.71	0.000	0.000		0.000		~6
1.10	0.000	0.000	2.39	1.000	0.250	48
2.01	0.000	0.000		0.500	0.000	~6
Notes:			Notes:			



Pile Load Testing

Project: Dolores Canyon
 Project Number: 61205151

Terracon Rep: S.F. Paroski
 Location No.: PT 1-4
 Date: 8/26/2020

Pile Size: W8x10
 Driven Depth (in.): 72
 Time to Drive (sec.): 28

Load: Trackhoe

Axial Load Test			Lateral Load Test			
Axial Load Test (-Compression) (+Tension) (kip)	Elastic Deflection Δ (inches)	Plastic Deflection Δ (inches)	Lateral Load (kip)	Elastic Deflection Δ (inches)	Plastic Deflection Δ (inches)	Lateral Gage Position: (inches above grade)
-4.87	0.000	0.000	4.16	0.500		48
-8.50	0.068	0.000		0.250		~6
0.92	0.000	0.000	6.18	1.000	0.250	48
1.63	0.000	0.000		0.500	0.000	~6
Notes:			Notes:			

Terracon Rep: S.F. Paroski
 Location No.: PT 1-4
 Date: 8/26/2020

Pile Size: C8
 Driven Depth (in.): 72
 Time to Drive (sec.): 24

Load: Trackhoe

Axial Load Test			Lateral Load Test			
Axial Load Test (-Compression) (+Tension) (kip)	Elastic Deflection Δ (inches)	Plastic Deflection Δ (inches)	Lateral Load (kip)	Elastic Deflection Δ (inches)	Plastic Deflection Δ (inches)	Lateral Gage Position: (inches above grade)
-5.65	0.000	0.000	1.13	0.500		48
-9.52	0.076	0.000		0.000		~6
0.90	0.000	0.000	2.52	0.750	0.000	48
1.94	0.000	0.000		0.250	0.000	~6
Notes:			Notes:			



Pile Load Testing

Project: Dolores Canyon
 Project Number: 61205151

Terracon Rep: S.F. Paroski
 Location No.: PT 1-5
 Date: 8/26/2020

Pile Size: W8x10
 Driven Depth (in.): 72
 Time to Drive (sec.): 29

Load: Trackhoe

Axial Load Test			Lateral Load Test			
Axial Load Test (-Compression) (+Tension) (kip)	Elastic Deflection Δ (inches)	Plastic Deflection Δ (inches)	Lateral Load (kip)	Elastic Deflection Δ (inches)	Plastic Deflection Δ (inches)	Lateral Gage Position: (inches above grade)
-3.66	0.000	0.000	4.18	1.000		48
-7.22	0.000	0.000		0.250		~6
1.01	0.000	0.000	6.14	1.500	0.375	48
1.57	0.000	0.000		0.500	0.000	~6
Notes:			Notes:			

Terracon Rep: S.F. Paroski
 Location No.: PT 1-5
 Date: 8/26/2020

Pile Size: C8
 Driven Depth (in.): 72
 Time to Drive (sec.): 30

Load: Trackhoe

Axial Load Test			Lateral Load Test			
Axial Load Test (-Compression) (+Tension) (kip)	Elastic Deflection Δ (inches)	Plastic Deflection Δ (inches)	Lateral Load (kip)	Elastic Deflection Δ (inches)	Plastic Deflection Δ (inches)	Lateral Gage Position: (inches above grade)
-4.87	0.000	0.000	1.34	0.750		48
-9.54	0.000	0.000		0.250		~6
0.91	0.000	0.000	2.59	1.000	0.000	48
2.01	0.000	0.000		0.500	0.000	~6
Notes:			Notes:			



Pile Load Testing

Project: Dolores Canyon
 Project Number: 61205151

Terracon Rep: S.F. Paroski
 Location No.: PT 1-6
 Date: 8/25/2020

Pile Size: W8x10
 Driven Depth (in.): 72
 Time to Drive (sec.): 38

Load: Trackhoe

Axial Load Test			Lateral Load Test			
Axial Load Test (-Compression) (+Tension) (kip)	Elastic Deflection Δ (inches)	Plastic Deflection Δ (inches)	Lateral Load (kip)	Elastic Deflection Δ (inches)	Plastic Deflection Δ (inches)	Lateral Gage Position: (inches above grade)
-4.75	0.000	0.000	4.07	0.500		48
-7.53	0.000	0.000		0.000		~6
0.84	0.000	0.000	4.20	0.750	0.000	48
1.67	0.000	0.000		0.250	0.000	~6
Notes:			Notes:			

Terracon Rep: S.F. Paroski
 Location No.: PT 1-6
 Date: 8/25/2020

Pile Size: C8
 Driven Depth (in.): 72
 Time to Drive (sec.): 30

Load: Trackhoe

Axial Load Test			Lateral Load Test			
Axial Load Test (-Compression) (+Tension) (kip)	Elastic Deflection Δ (inches)	Plastic Deflection Δ (inches)	Lateral Load (kip)	Elastic Deflection Δ (inches)	Plastic Deflection Δ (inches)	Lateral Gage Position: (inches above grade)
-5.40	0.025	0.000	1.19	0.500		48
-9.51	0.036	0.000		0.500		~6
0.94	0.000	0.000	2.32	0.750	0.000	48
1.72	0.000	0.000		0.500	0.000	~6
Notes:			Notes:			



Pile Load Testing

Project: Dolores Canyon
 Project Number: 61205151

Terracon Rep: S.F. Paroski
 Location No.: PT 1-7
 Date: 8/25/2020

Pile Size: W8x10
 Driven Depth (in.): 72
 Time to Drive (sec.): 31

Load: Trackhoe

Axial Load Test			Lateral Load Test			
Axial Load Test (-Compression) (+Tension) (kip)	Elastic Deflection Δ (inches)	Plastic Deflection Δ (inches)	Lateral Load (kip)	Elastic Deflection Δ (inches)	Plastic Deflection Δ (inches)	Lateral Gage Position: (inches above grade)
-4.36	0.020	0.000	4.12	0.750		48
-7.12	0.034	0.000		0.250		~6
0.85	0.000	0.000	6.33	1.250	0.250	48
1.53	0.000	0.000		0.750	0.125	~6
Notes:			Notes:			

Terracon Rep: S.F. Paroski
 Location No.: PT 1-7
 Date: 8/25/2020

Pile Size: C8
 Driven Depth (in.): 72
 Time to Drive (sec.): 28

Load: Trackhoe

Axial Load Test			Lateral Load Test			
Axial Load Test (-Compression) (+Tension) (kip)	Elastic Deflection Δ (inches)	Plastic Deflection Δ (inches)	Lateral Load (kip)	Elastic Deflection Δ (inches)	Plastic Deflection Δ (inches)	Lateral Gage Position: (inches above grade)
-5.46	0.028	0.000	1.48	0.500		48
-9.66	0.028	0.000		0.000		~6
1.09	0.000	0.000	2.30	0.750	0.000	48
2.00	0.000	0.000		0.250	0.000	~6
Notes:			Notes:			



Pile Load Testing

Project: Dolores Canyon
 Project Number: 61205151

Terracon Rep: S.F. Paroski
 Location No.: PT 1-8
 Date: 8/25/2020

Pile Size: W8x10
 Driven Depth (in.): 72
 Time to Drive (sec.): 18

Load: Trackhoe

Axial Load Test			Lateral Load Test			
Axial Load Test (-Compression) (+Tension) (kip)	Elastic Deflection Δ (inches)	Plastic Deflection Δ (inches)	Lateral Load (kip)	Elastic Deflection Δ (inches)	Plastic Deflection Δ (inches)	Lateral Gage Position: (inches above grade)
-3.50	0.016	0.000	4.29	0.750		48
-7.44	0.017	0.000		0.250		~6
0.97	0.000	0.000	6.12	1.250	0.250	48
1.81	0.000	0.000		0.500	0.000	~6
Notes:			Notes:			

Terracon Rep: S.F. Paroski
 Location No.: PT 1-8
 Date: 8/25/2020

Pile Size: C8
 Driven Depth (in.): 72
 Time to Drive (sec.): 20

Load: Trackhoe

Axial Load Test			Lateral Load Test			
Axial Load Test (-Compression) (+Tension) (kip)	Elastic Deflection Δ (inches)	Plastic Deflection Δ (inches)	Lateral Load (kip)	Elastic Deflection Δ (inches)	Plastic Deflection Δ (inches)	Lateral Gage Position: (inches above grade)
-4.75	0.019	0.000	1.31	0.500		48
-9.61	0.019	0.000		0.000		~6
1.30	0.000	0.000	2.61	1.000	0.250	48
1.71	0.000	0.000		0.500	0.000	~6
Notes:			Notes:			



Pile Load Testing

Project: Dolores Canyon
 Project Number: 61205151

Terracon Rep: S.F. Paroski
 Location No.: PT 1-9
 Date: 8/26/2020

Pile Size: W8x10
 Driven Depth (in.): 72
 Time to Drive (sec.): 28

Load: Trackhoe

Axial Load Test			Lateral Load Test			
Axial Load Test (-Compression) (+Tension) (kip)	Elastic Deflection Δ (inches)	Plastic Deflection Δ (inches)	Lateral Load (kip)	Elastic Deflection Δ (inches)	Plastic Deflection Δ (inches)	Lateral Gage Position: (inches above grade)
-4.57	0.000	0.000	4.15	0.750		48
-7.46	0.027	0.000		0.250		~6
0.90	0.000	0.000	6.18	1.500	0.250	48
1.78	0.000	0.000		0.500	0.000	~6
Notes:			Notes:			

Terracon Rep: S.F. Paroski
 Location No.: PT 1-9
 Date: 8/26/2020

Pile Size: C8
 Driven Depth (in.): 72
 Time to Drive (sec.): 21

Load: Trackhoe

Axial Load Test			Lateral Load Test			
Axial Load Test (-Compression) (+Tension) (kip)	Elastic Deflection Δ (inches)	Plastic Deflection Δ (inches)	Lateral Load (kip)	Elastic Deflection Δ (inches)	Plastic Deflection Δ (inches)	Lateral Gage Position: (inches above grade)
-4.96	0.000	0.000	1.34	0.500		48
-9.53	0.000	0.000		0.250		~6
1.02	0.000	0.000	2.37	1.000	0.000	48
1.82	0.000	0.000		1.000	0.000	~6
Notes:			Notes:			



Pile Load Testing

Project: Dolores Canyon
 Project Number: 61205151

Terracon Rep: S.F. Paroski
 Location No.: PT 1-10
 Date: 8/26/2020

Pile Size: W8x10
 Driven Depth (in.): 72
 Time to Drive (sec.): 22

Load: Trackhoe

Axial Load Test			Lateral Load Test			
Axial Load Test (-Compression) (+Tension) (kip)	Elastic Deflection Δ (inches)	Plastic Deflection Δ (inches)	Lateral Load (kip)	Elastic Deflection Δ (inches)	Plastic Deflection Δ (inches)	Lateral Gage Position: (inches above grade)
-5.30	0.000	0.000	4.44	1.000		48
-7.45	0.000	0.000		0.250		~6
0.77	0.000	0.000	6.08	1.500	0.375	48
1.64	0.000	0.000		0.500	0.000	~6
Notes:			Notes:			

Terracon Rep: S.F. Paroski
 Location No.: PT 1-10
 Date: 8/26/2020

Pile Size: C8
 Driven Depth (in.): 72
 Time to Drive (sec.): 35

Load: Trackhoe

Axial Load Test			Lateral Load Test			
Axial Load Test (-Compression) (+Tension) (kip)	Elastic Deflection Δ (inches)	Plastic Deflection Δ (inches)	Lateral Load (kip)	Elastic Deflection Δ (inches)	Plastic Deflection Δ (inches)	Lateral Gage Position: (inches above grade)
-5.34	0.000	0.000	1.46	0.500		48
-9.65	0.000	0.000		0.250		~6
1.07	0.000	0.000	2.38	0.875	0.000	48
1.79	0.000	0.000		0.500	0.000	~6
Notes:			Notes:			



Pile Load Testing

Project: Dolores Canyon
 Project Number: 61205151

Terracon Rep: S.F. Paroski
 Location No.: PT 2-1
 Date: 8/26/2020

Pile Size: W8x10
 Driven Depth (in.): 84
 Time to Drive (sec.): 61

Load: Trackhoe

Axial Load Test			Lateral Load Test			
Axial Load Test (-Compression) (+Tension) (kip)	Elastic Deflection Δ (inches)	Plastic Deflection Δ (inches)	Lateral Load (kip)	Elastic Deflection Δ (inches)	Plastic Deflection Δ (inches)	Lateral Gage Position: (inches above grade)
-3.95	0.000	0.000	4.09	1.000		48
-7.27	0.035	0.000		0.250		~6
0.84	0.000	0.000	6.57	2.000	0.375	48
1.51	0.000	0.000		1.000	0.000	~6
Notes:			Notes:			

Terracon Rep: S.F. Paroski
 Location No.: PT 2-1
 Date: 8/26/2020

Pile Size: C8
 Driven Depth (in.): 72
 Time to Drive (sec.): 25

Load: Trackhoe

Axial Load Test			Lateral Load Test			
Axial Load Test (-Compression) (+Tension) (kip)	Elastic Deflection Δ (inches)	Plastic Deflection Δ (inches)	Lateral Load (kip)	Elastic Deflection Δ (inches)	Plastic Deflection Δ (inches)	Lateral Gage Position: (inches above grade)
-4.77	0.000	0.000	1.43	0.750		48
-9.49	0.000	0.000		0.250		~6
0.99	0.000	0.000	2.35	1.250	0.000	48
1.94	0.000	0.000		0.500	0.000	~6
Notes: Pile on verge of failure at 9486 lbs			Notes:			



Pile Load Testing

Project: Dolores Canyon
 Project Number: 61205151

Terracon Rep: S.F. Paroski
 Location No.: PT 2-1
 Date: 8/26/2020

Pile Size: W8x10
 Driven Depth (in.): 72
 Time to Drive (sec.): 31

Load: Trackhoe

Axial Load Test			Lateral Load Test			
Axial Load Test (-Compression) (+Tension) (kip)	Elastic Deflection Δ (inches)	Plastic Deflection Δ (inches)	Lateral Load (kip)	Elastic Deflection Δ (inches)	Plastic Deflection Δ (inches)	Lateral Gage Position: (inches above grade)
-3.95	0.000	0.000	4.25	1.250		48
-7.27	0.035	0.000		0.500		~6
0.84	0.000	0.000	6.23	2.500	1.000	48
1.51	0.000	0.000		1.250	0.500	~6
Notes:			Notes: Plastic failure			

Terracon Rep: S.F. Paroski
 Location No.: PT 2-1
 Date: 8/26/2020

Pile Size: C8
 Driven Depth (in.): 72
 Time to Drive (sec.): 25

Load: Trackhoe

Axial Load Test			Lateral Load Test			
Axial Load Test (-Compression) (+Tension) (kip)	Elastic Deflection Δ (inches)	Plastic Deflection Δ (inches)	Lateral Load (kip)	Elastic Deflection Δ (inches)	Plastic Deflection Δ (inches)	Lateral Gage Position: (inches above grade)
-4.77	0.000	0.000	1.43	0.750		48
-9.49	0.000	0.000		0.250		~6
0.99	0.000	0.000	2.35	1.250	0.000	48
1.94	0.000	0.000		0.500	0.000	~6
Notes: Pile on verge of failure at 9486 lbs			Notes:			



Pile Load Testing

Project: Dolores Canyon
 Project Number: 61205151

Terracon Rep: S.F. Paroski
 Location No.: PT 2-2
 Date: 8/26/2020

Pile Size: W8x10
 Driven Depth (in.): 72
 Time to Drive (sec.): 44

Load: Trackhoe

Axial Load Test			Lateral Load Test			
Axial Load Test (-Compression) (+Tension) (kip)	Elastic Deflection Δ (inches)	Plastic Deflection Δ (inches)	Lateral Load (kip)	Elastic Deflection Δ (inches)	Plastic Deflection Δ (inches)	Lateral Gage Position: (inches above grade)
-3.62	0.000	0.000	4.27	0.500		48
-7.37	0.000	0.000		0.250		~6
0.90	0.000	0.000	6.18	0.750	0.000	48
1.51	0.000	0.000		0.500	0.000	~6
Notes:			Notes:			

Terracon Rep: S.F. Paroski
 Location No.: PT 2-2
 Date: 8/26/2020

Pile Size: C8
 Driven Depth (in.): 72
 Time to Drive (sec.): 30

Load: Trackhoe

Axial Load Test			Lateral Load Test			
Axial Load Test (-Compression) (+Tension) (kip)	Elastic Deflection Δ (inches)	Plastic Deflection Δ (inches)	Lateral Load (kip)	Elastic Deflection Δ (inches)	Plastic Deflection Δ (inches)	Lateral Gage Position: (inches above grade)
-5.84	0.000	0.000	1.38	0.500		48
-9.57	0.000	0.000		0.000		~6
1.28	0.000	0.000	2.45	1.000	0.250	48
1.99	0.000	0.000		0.250	0.000	~6
Notes:			Notes:			



Pile Load Testing

Project: Dolores Canyon
 Project Number: 61205151

Terracon Rep: S.F. Paroski
 Location No.: PT 2-3
 Date: 8/27/2020

Pile Size: W8x10
 Driven Depth (in.): 84
 Time to Drive (sec.): 57

Load: Trackhoe

Axial Load Test			Lateral Load Test			
Axial Load Test (-Compression) (+Tension) (kip)	Elastic Deflection Δ (inches)	Plastic Deflection Δ (inches)	Lateral Load (kip)	Elastic Deflection Δ (inches)	Plastic Deflection Δ (inches)	Lateral Gage Position: (inches above grade)
-4.99	0.000	0.000	4.14	1.000		48
-8.06	0.000	0.000		0.250		~6
0.83	0.000	0.000	6.18	1.375	0.250	48
1.61	0.000	0.000		0.750	0.000	~6
Notes:			Notes:			

Terracon Rep: S.F. Paroski
 Location No.: PT 2-3
 Date: 8/27/2020

Pile Size: C8
 Driven Depth (in.): 72
 Time to Drive (sec.): 37

Load: Trackhoe

Axial Load Test			Lateral Load Test			
Axial Load Test (-Compression) (+Tension) (kip)	Elastic Deflection Δ (inches)	Plastic Deflection Δ (inches)	Lateral Load (kip)	Elastic Deflection Δ (inches)	Plastic Deflection Δ (inches)	Lateral Gage Position: (inches above grade)
-6.01	0.000	0.000	1.23	0.625		48
-9.82	0.000	0.000		0.250		~6
0.92	0.000	0.000	2.50	1.250	0.250	48
2.07	0.000	0.000		0.500	0.000	~6
Notes:			Notes:			



Pile Load Testing

Project: Dolores Canyon
 Project Number: 61205151

Terracon Rep: S.F. Paroski
 Location No.: PT 2-3
 Date: 8/27/2020

Pile Size: W8x10
 Driven Depth (in.): 72
 Time to Drive (sec.): 31

Load: Trackhoe

Axial Load Test			Lateral Load Test			
Axial Load Test (-Compression) (+Tension) (kip)	Elastic Deflection Δ (inches)	Plastic Deflection Δ (inches)	Lateral Load (kip)	Elastic Deflection Δ (inches)	Plastic Deflection Δ (inches)	Lateral Gage Position: (inches above grade)
-4.64	0.000	0.000	4.04	1.625		48
-7.44	0.000	0.000		1.000		~6
0.86	0.000	0.000	5.24	>3.0	1.125	48
1.61	0.000	0.000		1.500	0.500	~6
Notes:			Notes: Lateral failed at 72 inches			

Terracon Rep: S.F. Paroski
 Location No.: PT 2-3
 Date: 8/27/2020

Pile Size: C8
 Driven Depth (in.): 72
 Time to Drive (sec.): 37

Load: Trackhoe

Axial Load Test			Lateral Load Test			
Axial Load Test (-Compression) (+Tension) (kip)	Elastic Deflection Δ (inches)	Plastic Deflection Δ (inches)	Lateral Load (kip)	Elastic Deflection Δ (inches)	Plastic Deflection Δ (inches)	Lateral Gage Position: (inches above grade)
-6.01	0.000	0.000	1.23	0.625		48
-9.82	0.000	0.000		0.250		~6
0.92	0.000	0.000	2.50	1.250	0.250	48
2.07	0.000	0.000		0.500	0.000	~6
Notes:			Notes:			



Pile Load Testing

Project: Dolores Canyon
 Project Number: 61205151

Terracon Rep: S.F. Paroski
 Location No.: PT 2-5
 Date: 8/27/2020

Pile Size: W8x10
 Driven Depth (in.): 72
 Time to Drive (sec.): 43

Load: Trackhoe

Axial Load Test			Lateral Load Test			
Axial Load Test (-Compression) (+Tension) (kip)	Elastic Deflection Δ (inches)	Plastic Deflection Δ (inches)	Lateral Load (kip)	Elastic Deflection Δ (inches)	Plastic Deflection Δ (inches)	Lateral Gage Position: (inches above grade)
-4.05	0.000	0.000	4.22	0.750		48
-7.20	0.000	0.000		0.250		~6
1.02	0.000	0.000	6.11	1.750	0.500	48
2.00	0.000	0.000		1.000	0.000	~6
Notes:			Notes:			

Terracon Rep: S.F. Paroski
 Location No.: PT 2-5
 Date: 8/27/2020

Pile Size: C8
 Driven Depth (in.): 72
 Time to Drive (sec.): 33

Load: Trackhoe

Axial Load Test			Lateral Load Test			
Axial Load Test (-Compression) (+Tension) (kip)	Elastic Deflection Δ (inches)	Plastic Deflection Δ (inches)	Lateral Load (kip)	Elastic Deflection Δ (inches)	Plastic Deflection Δ (inches)	Lateral Gage Position: (inches above grade)
-4.77	0.000	0.000	1.36	0.500		48
-9.57	0.000	0.000		0.250		~6
1.18	0.000	0.000	2.48	1.000	0.250	48
1.87	0.000	0.000		0.500	0.000	~6
Notes:			Notes:			



Pile Load Testing

Project: Dolores Canyon
 Project Number: 61205151

Terracon Rep: S.F. Paroski
 Location No.: PT 2-4
 Date: 8/27/2020

Pile Size: W8x10
 Driven Depth (in.): 72
 Time to Drive (sec.): 42

Load: Trackhoe

Axial Load Test			Lateral Load Test			
Axial Load Test (-Compression) (+Tension) (kip)	Elastic Deflection Δ (inches)	Plastic Deflection Δ (inches)	Lateral Load (kip)	Elastic Deflection Δ (inches)	Plastic Deflection Δ (inches)	Lateral Gage Position: (inches above grade)
-4.16	0.000	0.000	4.12	0.500		48
-7.63	0.000	0.000		0.000		~6
0.82	0.000	0.000	6.42	1.000	0.250	48
1.66	0.000	0.000		0.250	0.000	~6
Notes:			Notes:			

Terracon Rep: S.F. Paroski
 Location No.: PT 2-4
 Date: 8/27/2020

Pile Size: C8
 Driven Depth (in.): 72
 Time to Drive (sec.): 33

Load: Trackhoe

Axial Load Test			Lateral Load Test			
Axial Load Test (-Compression) (+Tension) (kip)	Elastic Deflection Δ (inches)	Plastic Deflection Δ (inches)	Lateral Load (kip)	Elastic Deflection Δ (inches)	Plastic Deflection Δ (inches)	Lateral Gage Position: (inches above grade)
-4.98	0.000	0.000	1.14	0.375		48
-9.51	0.000	0.000		0.250		~6
0.91	0.000	0.000	2.56	0.875	0.000	48
2.26	0.000	0.000		0.500	0.000	~6
Notes:			Notes:			



Pile Load Testing

Project: Dolores Canyon
 Project Number: 61205151

Terracon Rep: S.F. Paroski
 Location No.: PT 2-6
 Date: 8/28/2020

Pile Size: W8x10
 Driven Depth (in.): 72
 Time to Drive (sec.): 47

Load: Trackhoe

Axial Load Test			Lateral Load Test			
Axial Load Test (-Compression) (+Tension) (kip)	Elastic Deflection Δ (inches)	Plastic Deflection Δ (inches)	Lateral Load (kip)	Elastic Deflection Δ (inches)	Plastic Deflection Δ (inches)	Lateral Gage Position: (inches above grade)
-3.82	0.000	0.000	4.25	0.500		48
-7.32	0.000	0.000		0.000		~6
0.84	0.000	0.000	6.08	0.875	0.000	48
1.58	0.000	0.000		0.250	0.000	~6
Notes:			Notes:			

Terracon Rep: S.F. Paroski
 Location No.: PT 2-6
 Date: 8/28/2020

Pile Size: C8
 Driven Depth (in.): 72
 Time to Drive (sec.): 25

Load: Trackhoe

Axial Load Test			Lateral Load Test			
Axial Load Test (-Compression) (+Tension) (kip)	Elastic Deflection Δ (inches)	Plastic Deflection Δ (inches)	Lateral Load (kip)	Elastic Deflection Δ (inches)	Plastic Deflection Δ (inches)	Lateral Gage Position: (inches above grade)
-5.65	0.000	0.000	1.22	0.500		48
-9.53	0.000	0.000		0.000		~6
1.05	0.000	0.000	2.34	0.750	0.000	48
1.93	0.000	0.000		0.250	0.000	~6
Notes:			Notes:			



Pile Load Testing

Project: Dolores Canyon
 Project Number: 61205151

Terracon Rep: S.F. Paroski
 Location No.: PT 2-7
 Date: 8/27/2020

Pile Size: W8x10
 Driven Depth (in.): 72
 Time to Drive (sec.): 28

Load: Trackhoe

Axial Load Test			Lateral Load Test			
Axial Load Test (-Compression) (+Tension) (kip)	Elastic Deflection Δ (inches)	Plastic Deflection Δ (inches)	Lateral Load (kip)	Elastic Deflection Δ (inches)	Plastic Deflection Δ (inches)	Lateral Gage Position: (inches above grade)
-4.90	0.000	0.000	4.07	0.750		48
-7.28	0.000	0.000		0.250		~6
0.99	0.000	0.000	6.04	1.250	0.250	48
1.57	0.000	0.000		0.750	0.000	~6
Notes:			Notes:			

Terracon Rep: S.F. Paroski
 Location No.: PT 2-7
 Date: 8/27/2020

Pile Size: C8
 Driven Depth (in.): 72
 Time to Drive (sec.): 28

Load: Trackhoe

Axial Load Test			Lateral Load Test			
Axial Load Test (-Compression) (+Tension) (kip)	Elastic Deflection Δ (inches)	Plastic Deflection Δ (inches)	Lateral Load (kip)	Elastic Deflection Δ (inches)	Plastic Deflection Δ (inches)	Lateral Gage Position: (inches above grade)
-5.27	0.000	0.000	1.14	0.375		48
-9.64	0.025	0.000		0.250		~6
1.42	0.000	0.000	2.42	1.125	0.250	48
1.81	0.000	0.000		0.750	0.000	~6
Notes:			Notes:			



Pile Load Testing

Project: Dolores Canyon
 Project Number: 61205151

Terracon Rep: S.F. Paroski
 Location No.: PT 2-8
 Date: 8/27/2020

Pile Size: W8x10
 Driven Depth (in.): 72
 Time to Drive (sec.): 62

Load: Trackhoe

Axial Load Test			Lateral Load Test			
Axial Load Test (-Compression) (+Tension) (kip)	Elastic Deflection Δ (inches)	Plastic Deflection Δ (inches)	Lateral Load (kip)	Elastic Deflection Δ (inches)	Plastic Deflection Δ (inches)	Lateral Gage Position: (inches above grade)
-4.91	0.000	0.000	4.21	0.750		48
-7.37	0.000	0.000		0.250		~6
0.93	0.000	0.000	6.40	1.125	0.000	48
1.85	0.000	0.000		0.750	0.000	~6
Notes:			Notes:			

Terracon Rep: S.F. Paroski
 Location No.: PT 2-8
 Date: 8/27/2020

Pile Size: C8
 Driven Depth (in.): 72
 Time to Drive (sec.): 31

Load: Trackhoe

Axial Load Test			Lateral Load Test			
Axial Load Test (-Compression) (+Tension) (kip)	Elastic Deflection Δ (inches)	Plastic Deflection Δ (inches)	Lateral Load (kip)	Elastic Deflection Δ (inches)	Plastic Deflection Δ (inches)	Lateral Gage Position: (inches above grade)
-5.67	0.000	0.000	1.13	0.375		48
-9.59	0.000	0.000		0.250		~6
1.06	0.000	0.000	2.42	0.875	0.000	48
1.81	0.000	0.000		0.500	0.000	~6
Notes:			Notes:			



Pile Load Testing

Project: Dolores Canyon
 Project Number: 61205151

Terracon Rep: S.F. Paroski
 Location No.: PT 2-9
 Date: 8/27/2020

Pile Size: W8x10
 Driven Depth (in.): 72
 Time to Drive (sec.): 29

Load: Trackhoe

Axial Load Test			Lateral Load Test			
Axial Load Test (-Compression) (+Tension) (kip)	Elastic Deflection Δ (inches)	Plastic Deflection Δ (inches)	Lateral Load (kip)	Elastic Deflection Δ (inches)	Plastic Deflection Δ (inches)	Lateral Gage Position: (inches above grade)
-3.70	0.000	0.000	4.04	1.000		48
-7.39	0.000	0.000		0.250		~6
1.06	0.000	0.000	6.00	2.000	0.500	48
1.63	0.000	0.000		1.000	0.000	~6
Notes:			Notes:			

Terracon Rep: S.F. Paroski
 Location No.: PT 2-9
 Date: 8/27/2020

Pile Size: C8
 Driven Depth (in.): 72
 Time to Drive (sec.): 31

Load: Trackhoe

Axial Load Test			Lateral Load Test			
Axial Load Test (-Compression) (+Tension) (kip)	Elastic Deflection Δ (inches)	Plastic Deflection Δ (inches)	Lateral Load (kip)	Elastic Deflection Δ (inches)	Plastic Deflection Δ (inches)	Lateral Gage Position: (inches above grade)
-5.06	0.000	0.000	1.33	0.500		48
-9.66	0.000	0.000		0.250		~6
0.99	0.000	0.000	2.41	1.250	0.250	48
1.85	0.000	0.000		1.000	0.000	~6
Notes:			Notes:			



Pile Load Testing

Project: Dolores Canyon
 Project Number: 61205151

Terracon Rep: S.F. Paroski
 Location No.: PT 3-1
 Date: 9/2/2020

Pile Size: W8x10
 Driven Depth (in.): 72
 Time to Drive (sec.): 31

Load: Trackhoe

Axial Load Test			Lateral Load Test			
Axial Load Test (-Compression) (+Tension) (kip)	Elastic Deflection Δ (inches)	Plastic Deflection Δ (inches)	Lateral Load (kip)	Elastic Deflection Δ (inches)	Plastic Deflection Δ (inches)	Lateral Gage Position: (inches above grade)
-4.43	0.000	0.000	4.09	0.750		48
-7.20	0.000	0.000		0.250		~6
0.78	0.000	0.000	6.19	1.250	0.250	48
1.61	0.000	0.000		0.500	0.000	~6
Notes:			Notes:			

Terracon Rep: S.F. Paroski
 Location No.: PT 3-1
 Date: 9/2/2020

Pile Size: C8
 Driven Depth (in.): 72
 Time to Drive (sec.): 28

Load: Trackhoe

Axial Load Test			Lateral Load Test			
Axial Load Test (-Compression) (+Tension) (kip)	Elastic Deflection Δ (inches)	Plastic Deflection Δ (inches)	Lateral Load (kip)	Elastic Deflection Δ (inches)	Plastic Deflection Δ (inches)	Lateral Gage Position: (inches above grade)
-4.92	0.000	0.000	1.58	0.500		48
-9.58	0.000	0.000		0.250		~6
0.83	0.000	0.000	2.47	1.000	0.000	48
1.87	0.000	0.000		0.500	0.000	~6
Notes:			Notes:			



Pile Load Testing

Project: Dolores Canyon
 Project Number: 61205151

Terracon Rep: S.F. Paroski
 Location No.: PT 3-2
 Date: 9/3/2020

Pile Size: W8x10
 Driven Depth (in.): 72
 Time to Drive (sec.): 37

Load: Trackhoe

Axial Load Test			Lateral Load Test			
Axial Load Test (-Compression) (+Tension) (kip)	Elastic Deflection Δ (inches)	Plastic Deflection Δ (inches)	Lateral Load (kip)	Elastic Deflection Δ (inches)	Plastic Deflection Δ (inches)	Lateral Gage Position: (inches above grade)
-4.06	0.000	0.000	4.29	0.750		48
-7.53	0.000	0.000		0.250		~6
0.79	0.000	0.000	6.19	1.000	0.250	48
1.75	0.000	0.000		0.500	0.000	~6
Notes:			Notes:			

Terracon Rep: S.F. Paroski
 Location No.: PT 3-2
 Date: 9/3/2020

Pile Size: C8
 Driven Depth (in.): 72
 Time to Drive (sec.): 35

Load: Trackhoe

Axial Load Test			Lateral Load Test			
Axial Load Test (-Compression) (+Tension) (kip)	Elastic Deflection Δ (inches)	Plastic Deflection Δ (inches)	Lateral Load (kip)	Elastic Deflection Δ (inches)	Plastic Deflection Δ (inches)	Lateral Gage Position: (inches above grade)
-5.16	0.000	0.000	1.50	0.750		48
-9.64	0.000	0.000		0.250		~6
0.97	0.000	0.000	2.38	1.000	0.250	48
1.78	0.000	0.000		0.500	0.000	~6
Notes:			Notes:			



Pile Load Testing

Project: Dolores Canyon
 Project Number: 61205151

Terracon Rep: S.F. Paroski
 Location No.: PT 3-3
 Date: 9/3/2020

Pile Size: W8x10
 Driven Depth (in.): 72
 Time to Drive (sec.): 27

Load: Trackhoe

Axial Load Test			Lateral Load Test			
Axial Load Test (-Compression) (+Tension) (kip)	Elastic Deflection Δ (inches)	Plastic Deflection Δ (inches)	Lateral Load (kip)	Elastic Deflection Δ (inches)	Plastic Deflection Δ (inches)	Lateral Gage Position: (inches above grade)
-3.80	0.000	0.000	4.25	1.000		48
-7.11	0.000	0.000		0.250		~6
0.78	0.000	0.000	6.13	1.500	0.500	48
1.57	0.000	0.000		0.500	0.000	~6
Notes:			Notes:			

Terracon Rep: S.F. Paroski
 Location No.: PT 3-3
 Date: 9/3/2020

Pile Size: C8
 Driven Depth (in.): 72
 Time to Drive (sec.): 47

Load: Trackhoe

Axial Load Test			Lateral Load Test			
Axial Load Test (-Compression) (+Tension) (kip)	Elastic Deflection Δ (inches)	Plastic Deflection Δ (inches)	Lateral Load (kip)	Elastic Deflection Δ (inches)	Plastic Deflection Δ (inches)	Lateral Gage Position: (inches above grade)
-5.27	0.000	0.000	1.14	0.375		48
-9.76	0.000	0.000		0.000		~6
1.05	0.000	0.000	2.46	1.000	0.000	48
1.99	0.000	0.000		0.500	0.000	~6
Notes:			Notes:			



Pile Load Testing

Project: Dolores Canyon
 Project Number: 61205151

Terracon Rep: S.F. Paroski
 Location No.: PT 3-4
 Date: 9/2/2020

Pile Size: W8x10
 Driven Depth (in.): 72
 Time to Drive (sec.): 125

Load: Trackhoe

Axial Load Test			Lateral Load Test			
Axial Load Test (-Compression) (+Tension) (kip)	Elastic Deflection Δ (inches)	Plastic Deflection Δ (inches)	Lateral Load (kip)	Elastic Deflection Δ (inches)	Plastic Deflection Δ (inches)	Lateral Gage Position: (inches above grade)
-3.94	0.000	0.000	4.19	0.750		48
-7.11	0.000	0.000		0.250		~6
0.81	0.000	0.000	6.19	1.250	0.250	48
2.13	0.000	0.000		0.500	0.000	~6
Notes:			Notes:			

Terracon Rep: S.F. Paroski
 Location No.: PT 3-4
 Date: 9/2/2020

Pile Size: C8
 Driven Depth (in.): 72
 Time to Drive (sec.): 41

Load: Trackhoe

Axial Load Test			Lateral Load Test			
Axial Load Test (-Compression) (+Tension) (kip)	Elastic Deflection Δ (inches)	Plastic Deflection Δ (inches)	Lateral Load (kip)	Elastic Deflection Δ (inches)	Plastic Deflection Δ (inches)	Lateral Gage Position: (inches above grade)
-5.31	0.000	0.000	1.23	0.750		48
-9.59	0.000	0.000		0.250		~6
1.03	0.000	0.000	2.42	1.250	0.250	48
2.42	0.000	0.000		0.500	0.000	~6
Notes:			Notes:			



Pile Load Testing

Project: Dolores Canyon
 Project Number: 61205151

Terracon Rep: S.F. Paroski
 Location No.: PT 3-5
 Date: 9/2/2020

Pile Size: W8x10
 Driven Depth (in.): 72
 Time to Drive (sec.): 39

Load: Trackhoe

Axial Load Test			Lateral Load Test			
Axial Load Test (-Compression) (+Tension) (kip)	Elastic Deflection Δ (inches)	Plastic Deflection Δ (inches)	Lateral Load (kip)	Elastic Deflection Δ (inches)	Plastic Deflection Δ (inches)	Lateral Gage Position: (inches above grade)
-3.98	0.000	0.000	4.26	0.750		48
-7.34	0.000	0.000		0.250		~6
1.01	0.000	0.000	6.27	1.250	0.250	48
1.71	0.000	0.000		0.500	0.000	~6
Notes:			Notes:			

Terracon Rep: S.F. Paroski
 Location No.: PT 3-5
 Date: 9/2/2020

Pile Size: C8
 Driven Depth (in.): 72
 Time to Drive (sec.): 24

Load: Trackhoe

Axial Load Test			Lateral Load Test			
Axial Load Test (-Compression) (+Tension) (kip)	Elastic Deflection Δ (inches)	Plastic Deflection Δ (inches)	Lateral Load (kip)	Elastic Deflection Δ (inches)	Plastic Deflection Δ (inches)	Lateral Gage Position: (inches above grade)
-5.07	0.000	0.000	1.22	0.750		48
-9.93	0.000	0.000		0.250		~6
0.90	0.000	0.000	2.43	1.250	0.250	48
2.20	0.000	0.000		0.750	0.000	~6
Notes:			Notes:			



Pile Load Testing

Project: Dolores Canyon
 Project Number: 61205151

Terracon Rep: S.F. Paroski
 Location No.: PT 3-6
 Date: 9/3/2020

Pile Size: W8x10
 Driven Depth (in.): 72
 Time to Drive (sec.): 47

Load: Trackhoe

Axial Load Test			Lateral Load Test			
Axial Load Test (-Compression) (+Tension) (kip)	Elastic Deflection Δ (inches)	Plastic Deflection Δ (inches)	Lateral Load (kip)	Elastic Deflection Δ (inches)	Plastic Deflection Δ (inches)	Lateral Gage Position: (inches above grade)
-3.65	0.000	0.000	4.36	0.750		48
-7.36	0.000	0.000		0.250		~6
0.91	0.000	0.000	6.40	1.250	0.250	48
1.71	0.000	0.000		0.500	0.000	~6
Notes:			Notes:			

Terracon Rep: S.F. Paroski
 Location No.: PT 3-6
 Date: 9/3/2020

Pile Size: C8
 Driven Depth (in.): 72
 Time to Drive (sec.): 47

Load: Trackhoe

Axial Load Test			Lateral Load Test			
Axial Load Test (-Compression) (+Tension) (kip)	Elastic Deflection Δ (inches)	Plastic Deflection Δ (inches)	Lateral Load (kip)	Elastic Deflection Δ (inches)	Plastic Deflection Δ (inches)	Lateral Gage Position: (inches above grade)
-5.87	0.000	0.000	1.14	0.375		48
-9.89	0.000	0.000		0.000		~6
0.95	0.000	0.000	2.29	1.000	0.000	48
1.79	0.000	0.000		0.250	0.000	~6
Notes:			Notes:			



Pile Load Testing

Project: Dolores Canyon
 Project Number: 61205151

Terracon Rep: S.F. Paroski
 Location No.: PT 3-7
 Date: 9/3/2020

Pile Size: W8x10
 Driven Depth (in.): 72
 Time to Drive (sec.): 37

Load: Trackhoe

Axial Load Test			Lateral Load Test			
Axial Load Test (-Compression) (+Tension) (kip)	Elastic Deflection Δ (inches)	Plastic Deflection Δ (inches)	Lateral Load (kip)	Elastic Deflection Δ (inches)	Plastic Deflection Δ (inches)	Lateral Gage Position: (inches above grade)
-4.06	0.000	0.000	4.12	0.750		48
-7.41	0.000	0.000		0.250		~6
0.79	0.000	0.000	6.20	1.000	0.000	48
1.75	0.000	0.000		0.500	0.000	~6
Notes:			Notes:			

Terracon Rep: S.F. Paroski
 Location No.: PT 3-7
 Date: 9/3/2020

Pile Size: C8
 Driven Depth (in.): 72
 Time to Drive (sec.): 37

Load: Trackhoe

Axial Load Test			Lateral Load Test			
Axial Load Test (-Compression) (+Tension) (kip)	Elastic Deflection Δ (inches)	Plastic Deflection Δ (inches)	Lateral Load (kip)	Elastic Deflection Δ (inches)	Plastic Deflection Δ (inches)	Lateral Gage Position: (inches above grade)
-4.78	0.000	0.000	1.44	0.500		48
-9.60	0.000	0.000		0.250		~6
1.25	0.000	0.000	2.32	0.750	0.250	48
2.44	0.000	0.000		0.250	0.000	~6
Notes:			Notes:			



Pile Load Testing

Project: Dolores Canyon
 Project Number: 61205151

Terracon Rep: S.F. Paroski
 Location No.: PT 3-8
 Date: 8/28/2020

Pile Size: W8x10
 Driven Depth (in.): 72
 Time to Drive (sec.): 33

Load: Trackhoe

Axial Load Test			Lateral Load Test			
Axial Load Test (-Compression) (+Tension) (kip)	Elastic Deflection Δ (inches)	Plastic Deflection Δ (inches)	Lateral Load (kip)	Elastic Deflection Δ (inches)	Plastic Deflection Δ (inches)	Lateral Gage Position: (inches above grade)
-4.25	0.000	0.000	4.17	0.750		48
-7.36	0.000	0.000		0.250		~6
0.81	0.000	0.000	6.42	1.625	0.500	48
1.72	0.000	0.000		1.000	0.000	~6
Notes:			Notes:			

Terracon Rep: S.F. Paroski
 Location No.: PT 3-8
 Date: 8/28/2020

Pile Size: C8
 Driven Depth (in.): 72
 Time to Drive (sec.): 38

Load: Trackhoe

Axial Load Test			Lateral Load Test			
Axial Load Test (-Compression) (+Tension) (kip)	Elastic Deflection Δ (inches)	Plastic Deflection Δ (inches)	Lateral Load (kip)	Elastic Deflection Δ (inches)	Plastic Deflection Δ (inches)	Lateral Gage Position: (inches above grade)
-5.33	0.000	0.000	1.25	0.500		48
-9.62	0.000	0.000		0.000		~6
0.93	0.000	0.000	2.29	1.250	0.250	48
1.87	0.000	0.000		0.750	0.000	~6
Notes:			Notes:			



Pile Load Testing

Project: Dolores Canyon
 Project Number: 61205151

Terracon Rep: S.F. Paroski
 Location No.: PT 3-9
 Date: 8/28/2020

Pile Size: W8x10
 Driven Depth (in.): 72
 Time to Drive (sec.): 29

Load: Trackhoe

Axial Load Test			Lateral Load Test			
Axial Load Test (-Compression) (+Tension) (kip)	Elastic Deflection Δ (inches)	Plastic Deflection Δ (inches)	Lateral Load (kip)	Elastic Deflection Δ (inches)	Plastic Deflection Δ (inches)	Lateral Gage Position: (inches above grade)
-4.51	0.000	0.000	4.13	1.250		48
-7.33	0.000	0.000		0.500		~6
0.78	0.000	0.000	6.12	2.250	0.500	48
1.66	0.000	0.000		1.250	0.000	~6
Notes:			Notes:			

Terracon Rep: S.F. Paroski
 Location No.: PT 3-9
 Date: 8/28/2020

Pile Size: C8
 Driven Depth (in.): 72
 Time to Drive (sec.): 33

Load: Trackhoe

Axial Load Test			Lateral Load Test			
Axial Load Test (-Compression) (+Tension) (kip)	Elastic Deflection Δ (inches)	Plastic Deflection Δ (inches)	Lateral Load (kip)	Elastic Deflection Δ (inches)	Plastic Deflection Δ (inches)	Lateral Gage Position: (inches above grade)
-4.77	0.000	0.000	1.55	0.750		48
-9.55	0.000	0.000		0.250		~6
1.03	0.000	0.000	2.32	1.250	0.375	48
1.74	0.000	0.000		0.750	0.000	~6
Notes:			Notes:			



Pile Load Testing

Project: Dolores Canyon Pull Testing
 Project Number: 61205151

Terracon Rep: KMP
 Location No.: PT 3-10
 Date: 9/15/2020

Pile Size: W8x10
 Driven Depth (in.): 72
 Time to Drive (sec.): 20.60

Load: Pile Driver/ Fork Lift

Axial Load Test			Lateral Load Test			
Axial Load Test (-Compression) (+Tension) (kip)	Elastic Deflection Δ (inches)	Plastic Deflection Δ (inches)	Lateral Load (kip)	Elastic Deflection Δ (inches)	Plastic Deflection Δ (inches)	Lateral Gage Position: (inches above grade)
-3.94	0.017		4.26	0.500		
-7.37	0.036	0.002		0.250		
0.81	0.000		6.39	2.250	0.250	40
1.92	-0.002	0.000		1.000	0.000	3
Notes:			Notes:			

Terracon Rep: KMP
 Location No.: PT 3-10
 Date: 9/15/2020

Pile Size: C8
 Driven Depth (in.): 72
 Time to Drive (sec.): 19.20

Load: Pile Driver/ Fork Lift

Axial Load Test			Lateral Load Test			
Axial Load Test (-Compression) (+Tension) (kip)	Elastic Deflection Δ (inches)	Plastic Deflection Δ (inches)	Lateral Load (kip)	Elastic Deflection Δ (inches)	Plastic Deflection Δ (inches)	Lateral Gage Position: (inches above grade)
4.91	0.030		1.16	0.250		
9.76	0.008	0.000		0.250		
0.86	-0.003	-0.002	2.45	1.000	0.000	40
1.86	-0.003	-0.002		0.500	0.000	3
Notes:			Notes:			



Pile Load Testing

Project: Dolores Canyon Pull Testing
 Project Number: 61205151

Terracon Rep: KMP
 Location No.: PT 3-11
 Date: 9/15/2020

Pile Size: W8x10
 Driven Depth (in.): 72
 Time to Drive (sec.): 24.60

Load: Pile Driver/ Fork Lift

Axial Load Test			Lateral Load Test			
Axial Load Test (-Compression) (+Tension) (kip)	Elastic Deflection Δ (inches)	Plastic Deflection Δ (inches)	Lateral Load (kip)	Elastic Deflection Δ (inches)	Plastic Deflection Δ (inches)	Lateral Gage Position: (inches above grade)
-3.56	-0.001		4.10	1.000		
-7.52				0.250		
0.89	-0.001		6.18	1.750	0.500	40
2.26	-0.002	0.000		1.250	0.250	3
Notes:			Notes:			

Terracon Rep: KMP
 Location No.: PT 3-11
 Date: 9/15/2020

Pile Size: C8
 Driven Depth (in.): 72
 Time to Drive (sec.): 23.20

Load: Pile Driver/ Fork Lift

Axial Load Test			Lateral Load Test			
Axial Load Test (-Compression) (+Tension) (kip)	Elastic Deflection Δ (inches)	Plastic Deflection Δ (inches)	Lateral Load (kip)	Elastic Deflection Δ (inches)	Plastic Deflection Δ (inches)	Lateral Gage Position: (inches above grade)
-6.05	0.048		1.36	0.250		
-9.53	-0.001	0.006		0.000		
0.92	0.000		2.31	1.250	0.000	40
2.25	-0.007	0.000		0.500	0.000	3
Notes:			Notes:			



Pile Load Testing

Project: Dolores Canyon Pull Testing
 Project Number: 61205151

Terracon Rep: KMP
 Location No.: PT 3-12
 Date: 9/15/2020

Pile Size: W8x10
 Driven Depth (in.): 72
 Time to Drive (sec.): 14.30

Load: Pile Driver/ Fork Lift

Axial Load Test			Lateral Load Test			
Axial Load Test (-Compression) (+Tension) (kip)	Elastic Deflection Δ (inches)	Plastic Deflection Δ (inches)	Lateral Load (kip)	Elastic Deflection Δ (inches)	Plastic Deflection Δ (inches)	Lateral Gage Position: (inches above grade)
-5.82	0.033		4.12	0.875		
-7.47	0.570	0.022			0.250	
0.94	-0.002		6.35	1.625	0.500	40
1.57	-0.008	-0.001			1.000	0.000
Notes:			Notes:			

Terracon Rep: KMP
 Location No.: PT 3-12
 Date: 9/15/2020

Pile Size: C8
 Driven Depth (in.): 72
 Time to Drive (sec.): 13.20

Load: Pile Driver/ Fork Lift

Axial Load Test			Lateral Load Test			
Axial Load Test (-Compression) (+Tension) (kip)	Elastic Deflection Δ (inches)	Plastic Deflection Δ (inches)	Lateral Load (kip)	Elastic Deflection Δ (inches)	Plastic Deflection Δ (inches)	Lateral Gage Position: (inches above grade)
-4.76	0.025		1.25	0.500		
-9.55	0.600	0.007			0.250	
1.27	-0.001		2.29	1.250	0.250	40
1.90	-0.002	0.000			0.750	0.000
Notes:			Notes:			



Pile Load Testing

Project: Dolores Canyon
 Project Number: 61205151

Terracon Rep: S.F. Paroski
 Location No.: PT 3-13
 Date: 8/28/2020

Pile Size: W8x10
 Driven Depth (in.): 66
 Time to Drive (sec.): 135

Load: Trackhoe

Axial Load Test			Lateral Load Test			
Axial Load Test (-Compression) (+Tension) (kip)	Elastic Deflection Δ (inches)	Plastic Deflection Δ (inches)	Lateral Load (kip)	Elastic Deflection Δ (inches)	Plastic Deflection Δ (inches)	Lateral Gage Position: (inches above grade)
-3.73	0.000	0.000	4.11	0.875		48
-7.57	0.000	0.000		0.250		~6
0.91	0.000	0.000	6.04	1.500	0.500	48
1.65	0.000	0.000		0.750	0.000	~6
Notes:			Notes:			

Terracon Rep: S.F. Paroski
 Location No.: PT 3-13
 Date: 8/28/2020

Pile Size: C8
 Driven Depth (in.): 72
 Time to Drive (sec.): 126

Load: Trackhoe

Axial Load Test			Lateral Load Test			
Axial Load Test (-Compression) (+Tension) (kip)	Elastic Deflection Δ (inches)	Plastic Deflection Δ (inches)	Lateral Load (kip)	Elastic Deflection Δ (inches)	Plastic Deflection Δ (inches)	Lateral Gage Position: (inches above grade)
-6.08	0.000	0.000	1.16	0.500		48
-9.71	0.000	0.000		0.000		~6
0.92	0.000	0.000	2.43	1.500	0.250	48
1.82	0.000	0.000		0.500	0.000	~6
Notes:			Notes:			



Pile Load Testing

Project: Dolores Canyon
 Project Number: 61205151

Terracon Rep: S.F. Paroski
 Location No.: PT 3-14
 Date: 8/28/2020

Pile Size: W8x10
 Driven Depth (in.): 72
 Time to Drive (sec.): 62

Load: Trackhoe

Axial Load Test			Lateral Load Test			
Axial Load Test (-Compression) (+Tension) (kip)	Elastic Deflection Δ (inches)	Plastic Deflection Δ (inches)	Lateral Load (kip)	Elastic Deflection Δ (inches)	Plastic Deflection Δ (inches)	Lateral Gage Position: (inches above grade)
-4.54	0.000	0.000	4.29	1.000		48
-7.32	0.000	0.000		0.250		~6
0.77	0.000	0.000	6.16	1.375	0.250	48
1.94	0.000	0.000		1.000	0.000	~6
Notes:			Notes:			

Terracon Rep: S.F. Paroski
 Location No.: PT 3-14
 Date: 8/28/2020

Pile Size: C8
 Driven Depth (in.): 72
 Time to Drive (sec.): 50

Load: Trackhoe

Axial Load Test			Lateral Load Test			
Axial Load Test (-Compression) (+Tension) (kip)	Elastic Deflection Δ (inches)	Plastic Deflection Δ (inches)	Lateral Load (kip)	Elastic Deflection Δ (inches)	Plastic Deflection Δ (inches)	Lateral Gage Position: (inches above grade)
-6.02	0.000	0.000	1.35	0.375		48
-9.67	0.000	0.000		0.000		~6
1.26	0.000	0.000	2.28	0.875	0.125	48
1.86	0.000	0.000		0.500	0.000	~6
Notes:			Notes:			



Pile Load Testing

Project: Dolores Canyon
 Project Number: 61205151

Terracon Rep: S.F. Paroski
 Location No.: PT 3-15
 Date: 8/28/2020

Pile Size: W8x10
 Driven Depth (in.): 72
 Time to Drive (sec.): 30

Load: Trackhoe

Axial Load Test			Lateral Load Test			
Axial Load Test (-Compression) (+Tension) (kip)	Elastic Deflection Δ (inches)	Plastic Deflection Δ (inches)	Lateral Load (kip)	Elastic Deflection Δ (inches)	Plastic Deflection Δ (inches)	Lateral Gage Position: (inches above grade)
-3.68	0.000	0.000	4.25	1.000		48
-7.29	0.038	0.000		0.500		~6
0.79	0.000	0.000	6.38	2.250	0.750	48
1.67	0.000	0.000		1.500	0.500	~6
Notes:			Notes:			

Terracon Rep: S.F. Paroski
 Location No.: PT 3-15
 Date: 8/28/2020

Pile Size: C8
 Driven Depth (in.): 72
 Time to Drive (sec.): 21

Load: Trackhoe

Axial Load Test			Lateral Load Test			
Axial Load Test (-Compression) (+Tension) (kip)	Elastic Deflection Δ (inches)	Plastic Deflection Δ (inches)	Lateral Load (kip)	Elastic Deflection Δ (inches)	Plastic Deflection Δ (inches)	Lateral Gage Position: (inches above grade)
-4.98	0.000	0.000	1.36	0.500		48
-9.59	0.008	0.000		0.250		~6
1.04	0.000	0.000	2.34	1.375	0.250	48
1.83	0.000	0.000		0.500	0.000	~6
Notes:			Notes:			



Pile Load Testing

Project: Dolores Canyon Pull Testing
 Project Number: 61205151

Terracon Rep: KMP
 Location No.: PT 3-16
 Date: 9/15/2020

Pile Size: W8
 Driven Depth (in.): 72
 Time to Drive (sec.): 30.80

Load: Pile Driver/ Fork Lift

Axial Load Test			Lateral Load Test			
Axial Load Test (-Compression) (+Tension) (kip)	Elastic Deflection Δ (inches)	Plastic Deflection Δ (inches)	Lateral Load (kip)	Elastic Deflection Δ (inches)	Plastic Deflection Δ (inches)	Lateral Gage Position: (inches above grade)
-3.83	0.012		4.22	0.750		
-7.14	0.033	0.024		0.250		
0.80	0.000		6.69	1.500	0.000	40
2.27	0.000	0.000		0.500	0.000	3
Notes:			Notes:			

Terracon Rep: KMP
 Location No.: PT 3-16
 Date: 9/15/2020

Pile Size: C8
 Driven Depth (in.): 72
 Time to Drive (sec.): 22

Load: Pile Driver/ Fork Lift

Axial Load Test			Lateral Load Test			
Axial Load Test (-Compression) (+Tension) (kip)	Elastic Deflection Δ (inches)	Plastic Deflection Δ (inches)	Lateral Load (kip)	Elastic Deflection Δ (inches)	Plastic Deflection Δ (inches)	Lateral Gage Position: (inches above grade)
-5.58	0.022		1.36	0.500		
-10.02	0.037	0.009		0.250		
1.05	0.000		2.43	1.000	0.000	40
1.81	0.000	0.000		0.750	0.000	3
Notes:			Notes:			



Pile Load Testing

Project: Dolores Canyon Pull Testing
 Project Number: 61205151

Terracon Rep: KMP
 Location No.: PT 3-17
 Date: 9/15/2020

Pile Size: W8
 Driven Depth (in.): 72
 Time to Drive (sec.): 21.60

Load: Pile Driver/ Fork Lift

Axial Load Test			Lateral Load Test			
Axial Load Test (-Compression) (+Tension) (kip)	Elastic Deflection Δ (inches)	Plastic Deflection Δ (inches)	Lateral Load (kip)	Elastic Deflection Δ (inches)	Plastic Deflection Δ (inches)	Lateral Gage Position: (inches above grade)
-3.53	0.034		4.33	0.750		
-7.43	0.039	0.007		0.250		
1.14	-0.003		6.01	1.250	0.000	40
1.52	-0.003	0.000		0.500	0.000	3
Notes:			Notes:			

Terracon Rep: KMP
 Location No.: PT 3-17
 Date: 9/15/2020

Pile Size: C8
 Driven Depth (in.): 72
 Time to Drive (sec.): 21.10

Load: Pile Driver/ Fork Lift

Axial Load Test			Lateral Load Test			
Axial Load Test (-Compression) (+Tension) (kip)	Elastic Deflection Δ (inches)	Plastic Deflection Δ (inches)	Lateral Load (kip)	Elastic Deflection Δ (inches)	Plastic Deflection Δ (inches)	Lateral Gage Position: (inches above grade)
-5.65	0.044		1.47	0.500		
-9.75	0.047	0.000		0.250		
0.86	0.000		2.42	1.000	0.250	40
1.86	0.000	0.000		0.500	0.000	3
Notes:			Notes:			



Pile Load Testing

Project: Dolores Canyon Pull Testing
 Project Number: 61205151

Terracon Rep: KMP
 Location No.: PT 4-1
 Date: 9/14/2020

Pile Size: W8
 Driven Depth (in.): 72
 Time to Drive (sec.): 23.30

Load: Pile Driver/ Fork Lift

Axial Load Test			Lateral Load Test			
Axial Load Test (-Compression) (+Tension) (kip)	Elastic Deflection Δ (inches)	Plastic Deflection Δ (inches)	Lateral Load (kip)	Elastic Deflection Δ (inches)	Plastic Deflection Δ (inches)	Lateral Gage Position: (inches above grade)
-3.59	0.023		4.37	1.000		
-7.33	0.041	0.005		0.250		
0.99	0.000		6.07	1.500	0.375	40
2.29	0.000	0.000		0.750	0.000	3
Notes:			Notes:			

Terracon Rep: KMP
 Location No.: PT 4-1
 Date: 9/14/2020

Pile Size: C8
 Driven Depth (in.): 72
 Time to Drive (sec.): 26.00

Load: Pile Driver/ Fork Lift

Axial Load Test			Lateral Load Test			
Axial Load Test (-Compression) (+Tension) (kip)	Elastic Deflection Δ (inches)	Plastic Deflection Δ (inches)	Lateral Load (kip)	Elastic Deflection Δ (inches)	Plastic Deflection Δ (inches)	Lateral Gage Position: (inches above grade)
-4.80	0.035		1.23	0.500		
-9.64	0.051	0.002		0.250		
1.14	0.000		2.53	1.000	0.000	40
2.56	0.000	0.000		0.500	0.000	3
Notes:			Notes:			



Pile Load Testing

Project: Dolores Canyon Pull Testing
 Project Number: 61205151

Terracon Rep: KMP
 Location No.: PT 4-2
 Date: 9/14/2020

Pile Size: W8
 Driven Depth (in.): 72
 Time to Drive (sec.): 37.30

Load: Pile Driver/ Fork Lift

Axial Load Test			Lateral Load Test			
Axial Load Test (-Compression) (+Tension) (kip)	Elastic Deflection Δ (inches)	Plastic Deflection Δ (inches)	Lateral Load (kip)	Elastic Deflection Δ (inches)	Plastic Deflection Δ (inches)	Lateral Gage Position: (inches above grade)
-4.13	0.026		4.29	1.000		
-7.40	0.013	0.002		0.500		
0.96	0.000	0.000	6.42	1.375	0.250	40
1.55	0.000	0.000		1.000	0.000	3
Notes:			Notes:			

Terracon Rep: KMP
 Location No.: PT 4-2
 Date: 9/14/2020

Pile Size: C8
 Driven Depth (in.): 72
 Time to Drive (sec.): 28.40

Load: Pile Driver/ Fork Lift

Axial Load Test			Lateral Load Test			
Axial Load Test (-Compression) (+Tension) (kip)	Elastic Deflection Δ (inches)	Plastic Deflection Δ (inches)	Lateral Load (kip)	Elastic Deflection Δ (inches)	Plastic Deflection Δ (inches)	Lateral Gage Position: (inches above grade)
-4.77	0.020		1.41	0.750		
-9.64	0.042	0.004		0.250		
0.91	-0.001		2.48	1.250	0.250	40
1.72	-0.002	0.000		0.500	0.000	3
Notes:			Notes:			



Pile Load Testing

Project: Dolores Canyon Pull Testing
 Project Number: 61205151

Terracon Rep: KMP
 Location No.: PT 4-3
 Date: 9/14/2020

Pile Size: W8
 Driven Depth (in.): 72
 Time to Drive (sec.): 20.80

Load: Pile Driver/ Fork Lift

Axial Load Test				Lateral Load Test			
Axial Load Test (-Compression) (+Tension) (kip)	Elastic Deflection Δ (inches)	Plastic Deflection Δ (inches)		Lateral Load (kip)	Elastic Deflection Δ (inches)	Plastic Deflection Δ (inches)	Lateral Gage Position: (inches above grade)
-4.72	0.029			4.72	1.250		
-7.24	0.058	0.005			0.500		
1.04	-0.002			6.12	1.625	0.375	40
1.66	-0.003	-0.001			1.000	0.000	3
Notes:				Notes:			

Terracon Rep: KMP
 Location No.: PT 4-3
 Date: 9/14/2020

Pile Size: C8
 Driven Depth (in.): 72
 Time to Drive (sec.): 24.10

Load: Pile Driver/ Fork Lift

Axial Load Test				Lateral Load Test			
Axial Load Test (-Compression) (+Tension) (kip)	Elastic Deflection Δ (inches)	Plastic Deflection Δ (inches)		Lateral Load (kip)	Elastic Deflection Δ (inches)	Plastic Deflection Δ (inches)	Lateral Gage Position: (inches above grade)
-4.79	0.037			1.26	0.500		
-9.64	0.062	0.009			0.250		
1.05	0.000	0.000		2.41	1.250	0.250	40
1.76	0.000	0.000			0.500	0.000	3
Notes:				Notes:			



Pile Load Testing

Project: Dolores Canyon Pull Testing
 Project Number: 61205151

Terracon Rep: KMP
 Location No.: PT 4-4
 Date: 9/14/2020

Pile Size: W8
 Driven Depth (in.): 72
 Time to Drive (sec.): 24.10

Load: Pile Driver/ Fork Lift

Axial Load Test			Lateral Load Test			
Axial Load Test (-Compression) (+Tension) (kip)	Elastic Deflection Δ (inches)	Plastic Deflection Δ (inches)	Lateral Load (kip)	Elastic Deflection Δ (inches)	Plastic Deflection Δ (inches)	Lateral Gage Position: (inches above grade)
1113.00	-0.001		4201.00	0.250		
1634.00	-0.001	0.000	6203.00	1.250	0.250	40
				0.750	0.000	3
Notes:			Notes:			

Terracon Rep: KMP
 Location No.: PT 4-4
 Date: 9/14/2020

Pile Size: C8
 Driven Depth (in.): 72
 Time to Drive (sec.): 22.50

Load: Pile Driver/ Fork Lift

Axial Load Test			Lateral Load Test			
Axial Load Test (-Compression) (+Tension) (kip)	Elastic Deflection Δ (inches)	Plastic Deflection Δ (inches)	Lateral Load (kip)	Elastic Deflection Δ (inches)	Plastic Deflection Δ (inches)	Lateral Gage Position: (inches above grade)
1066.00	0.000		1143.00	0.750		
2033.00	0.000	0.000	2371.00	1.250	0.250	40
				0.500	0.000	3
Notes:			Notes:			

Compression Load Test		
Compression Load Load (kip)	Elastic Deflection Δ (inches)	Plastic Deflection Δ (inches)
3648.00	0.021	
7050.00	0.043	0.003
Notes:		

Compression Load Test		
Compression Load Load (kip)	Elastic Deflection Δ (inches)	Plastic Deflection Δ (inches)
4896.00	0.019	
9695.00	0.030	0.000
Notes:		



Pile Load Testing

Project: Dolores Canyon
 Project Number: 61205151

Terracon Rep: S.F. Paroski
 Location No.: PT 4-5
 Date: 9/3/2020

Pile Size: W8x10
 Driven Depth (in.): 72
 Time to Drive (sec.): 47

Load: Trackhoe

Axial Load Test			Lateral Load Test			
Axial Load Test (-Compression) (+Tension) (kip)	Elastic Deflection Δ (inches)	Plastic Deflection Δ (inches)	Lateral Load (kip)	Elastic Deflection Δ (inches)	Plastic Deflection Δ (inches)	Lateral Gage Position: (inches above grade)
-3.91	0.000	0.000	4.27	1.000		48
-7.21	0.000	0.000		0.250		~6
0.96	0.000	0.000	6.56	1.250	0.375	48
1.66	0.000	0.000		1.000	0.250	~6
Notes:			Notes:			

Terracon Rep: S.F. Paroski
 Location No.: PT 4-5
 Date: 9/3/2020

Pile Size: C8
 Driven Depth (in.): 72
 Time to Drive (sec.): 30

Load: Trackhoe

Axial Load Test			Lateral Load Test			
Axial Load Test (-Compression) (+Tension) (kip)	Elastic Deflection Δ (inches)	Plastic Deflection Δ (inches)	Lateral Load (kip)	Elastic Deflection Δ (inches)	Plastic Deflection Δ (inches)	Lateral Gage Position: (inches above grade)
-5.19	0.000	0.000	1.20	0.500		48
-9.63	0.000	0.000		0.250		~6
1.08	0.000	0.000	2.32	1.000	0.250	48
1.95	0.000	0.000		0.500	0.000	~6
Notes:			Notes:			



Pile Load Testing

Project: Dolores Canyon
 Project Number: 61205151

Terracon Rep: S.F. Paroski
 Location No.: PT 4-6
 Date: 9/4/2020

Pile Size: W8x10
 Driven Depth (in.): 70
 Time to Drive (sec.): 59

Load: Trackhoe

Axial Load Test			Lateral Load Test			
Axial Load Test (-Compression) (+Tension) (kip)	Elastic Deflection Δ (inches)	Plastic Deflection Δ (inches)	Lateral Load (kip)	Elastic Deflection Δ (inches)	Plastic Deflection Δ (inches)	Lateral Gage Position: (inches above grade)
-4.21	0.000	0.000	4.53	0.500		48
-7.46	0.000	0.000		0.250		~6
0.84	0.000	0.000	6.26	1.000	0.500	48
1.90	0.000	0.000		0.500	0.000	~6
Notes: Hit bedrock at 4.5'. Moved test over 10 feet and drove 70 inches. Tested 4.5' pile and passed both axial and lateral tests			Notes:			

Terracon Rep: S.F. Paroski
 Location No.: PT 4-6
 Date: 9/4/2020

Pile Size: C8
 Driven Depth (in.): 72
 Time to Drive (sec.): 96

Load: Trackhoe

Axial Load Test			Lateral Load Test			
Axial Load Test (-Compression) (+Tension) (kip)	Elastic Deflection Δ (inches)	Plastic Deflection Δ (inches)	Lateral Load (kip)	Elastic Deflection Δ (inches)	Plastic Deflection Δ (inches)	Lateral Gage Position: (inches above grade)
-5.55	0.000	0.000	1.36	0.500		48
-9.86	0.000	0.000		0.250		~6
1.07	0.000	0.000	2.57	1.250	0.250	48
2.28	0.000	0.000		0.500	0.000	~6
Notes:			Notes:			



Pile Load Testing

Project: Dolores Canyon
 Project Number: 61205151

Terracon Rep: S.F. Paroski
 Location No.: PT 4-7
 Date: 9/4/2020

Pile Size: W8x10
 Driven Depth (in.): 72
 Time to Drive (sec.): 42

Load: Trackhoe

Axial Load Test			Lateral Load Test			
Axial Load Test (-Compression) (+Tension) (kip)	Elastic Deflection Δ (inches)	Plastic Deflection Δ (inches)	Lateral Load (kip)	Elastic Deflection Δ (inches)	Plastic Deflection Δ (inches)	Lateral Gage Position: (inches above grade)
-5.17	0.000	0.000	4.13	1.000		48
-7.18	0.000	0.000		0.250		~6
1.11	0.000	0.000	6.30	2.375	0.250	48
1.55	0.000	0.000		0.500	0.000	~6
Notes:			Notes:			

Terracon Rep: S.F. Paroski
 Location No.: PT 4-7
 Date: 9/4/2020

Pile Size: C8
 Driven Depth (in.): 72
 Time to Drive (sec.): 33

Load: Trackhoe

Axial Load Test			Lateral Load Test			
Axial Load Test (-Compression) (+Tension) (kip)	Elastic Deflection Δ (inches)	Plastic Deflection Δ (inches)	Lateral Load (kip)	Elastic Deflection Δ (inches)	Plastic Deflection Δ (inches)	Lateral Gage Position: (inches above grade)
-5.34	0.000	0.000	1.40	0.750		48
-9.09	0.000	0.000		0.250		~6
0.94	0.000	0.000	2.51	1.250	0.250	48
2.15	0.000	0.000		0.500	0.000	~6
Notes: Pile on verge of failing on compression test. Stopped at 9085 lbs for safety			Notes:			



Pile Load Testing

Project: Dolores Canyon
 Project Number: 61205151

Terracon Rep: S.F. Paroski
 Location No.: PT 4-8
 Date: 9/4/2020

Pile Size: W8x10
 Driven Depth (in.): 72
 Time to Drive (sec.): 39

Load: Trackhoe

Axial Load Test			Lateral Load Test			
Axial Load Test (-Compression) (+Tension) (kip)	Elastic Deflection Δ (inches)	Plastic Deflection Δ (inches)	Lateral Load (kip)	Elastic Deflection Δ (inches)	Plastic Deflection Δ (inches)	Lateral Gage Position: (inches above grade)
-4.32	0.000	0.000	4.26	0.750		48
-7.32	0.000	0.000		0.500		~6
0.80	0.000	0.000	6.12	1.250	0.250	48
1.79	0.000	0.000		1.000	0.250	~6
Notes:			Notes:			

Terracon Rep: S.F. Paroski
 Location No.: PT 4-8
 Date: 9/4/2020

Pile Size: C8
 Driven Depth (in.): 72
 Time to Drive (sec.): 35

Load: Trackhoe

Axial Load Test			Lateral Load Test			
Axial Load Test (-Compression) (+Tension) (kip)	Elastic Deflection Δ (inches)	Plastic Deflection Δ (inches)	Lateral Load (kip)	Elastic Deflection Δ (inches)	Plastic Deflection Δ (inches)	Lateral Gage Position: (inches above grade)
-5.12	0.000	0.000	1.29	0.750		48
-9.64	0.000	0.000		0.250		~6
0.88	0.000	0.000	2.31	1.250	0.250	48
1.77	0.000	0.000		0.750	0.250	~6
Notes:			Notes:			



Pile Load Testing

Project: Dolores Canyon
 Project Number: 61205151

Terracon Rep: S.F. Paroski
 Location No.: PT 4-9
 Date: 9/4/2020

Pile Size: W8x10
 Driven Depth (in.): 72
 Time to Drive (sec.): 43

Load: Trackhoe

Axial Load Test			Lateral Load Test			
Axial Load Test (-Compression) (+Tension) (kip)	Elastic Deflection Δ (inches)	Plastic Deflection Δ (inches)	Lateral Load (kip)	Elastic Deflection Δ (inches)	Plastic Deflection Δ (inches)	Lateral Gage Position: (inches above grade)
-4.09	0.000	0.000	4.38	0.750		48
-7.12	0.000	0.000		0.500		~6
0.77	0.000	0.000	6.19	1.250	0.250	48
1.60	0.000	0.000		1.000	0.250	~6
Notes:			Notes:			

Terracon Rep: S.F. Paroski
 Location No.: PT 4-9
 Date: 9/4/2020

Pile Size: C8
 Driven Depth (in.): 72
 Time to Drive (sec.): 23

Load: Trackhoe

Axial Load Test			Lateral Load Test			
Axial Load Test (-Compression) (+Tension) (kip)	Elastic Deflection Δ (inches)	Plastic Deflection Δ (inches)	Lateral Load (kip)	Elastic Deflection Δ (inches)	Plastic Deflection Δ (inches)	Lateral Gage Position: (inches above grade)
-5.04	0.000	0.000	1.26	0.500		48
-9.66	0.000	0.000		0.250		~6
1.36	0.000	0.000	2.44	1.000	0.250	48
1.80	0.000	0.000		1.000	0.250	~6
Notes:			Notes:			



Pile Load Testing

Project: Dolores Canyon
 Project Number: 61205151

Terracon Rep: S.F. Paroski
 Location No.: PT 5-1
 Date: 9/3/2020

Pile Size: W8x10
 Driven Depth (in.): 72
 Time to Drive (sec.): 40

Load: Trackhoe

Axial Load Test			Lateral Load Test			
Axial Load Test (-Compression) (+Tension) (kip)	Elastic Deflection Δ (inches)	Plastic Deflection Δ (inches)	Lateral Load (kip)	Elastic Deflection Δ (inches)	Plastic Deflection Δ (inches)	Lateral Gage Position: (inches above grade)
-4.56	0.000	0.000	4.23	0.750		48
-7.33	0.000	0.000		0.250		~6
0.86	0.000	0.000	6.09	1.250	0.250	48
1.95	0.000	0.000		0.500	0.000	~6
Notes:			Notes:			

Terracon Rep: S.F. Paroski
 Location No.: PT 5-1
 Date: 9/3/2020

Pile Size: C8
 Driven Depth (in.): 72
 Time to Drive (sec.): 35

Load: Trackhoe

Axial Load Test			Lateral Load Test			
Axial Load Test (-Compression) (+Tension) (kip)	Elastic Deflection Δ (inches)	Plastic Deflection Δ (inches)	Lateral Load (kip)	Elastic Deflection Δ (inches)	Plastic Deflection Δ (inches)	Lateral Gage Position: (inches above grade)
-5.24	0.000	0.000	1.15	0.250		48
-9.63	0.000	0.000		0.250		~6
0.95	0.000	0.000	2.50	1.000	0.000	48
2.18	0.000	0.000		0.500	0.000	~6
Notes:			Notes:			



Pile Load Testing

Project: Dolores Canyon
 Project Number: 61205151

Terracon Rep: S.F. Paroski
 Location No.: PT 5-2
 Date: 9/3/2020

Pile Size: W8x10
 Driven Depth (in.): 72
 Time to Drive (sec.): 42

Load: Trackhoe

Axial Load Test			Lateral Load Test			
Axial Load Test (-Compression) (+Tension) (kip)	Elastic Deflection Δ (inches)	Plastic Deflection Δ (inches)	Lateral Load (kip)	Elastic Deflection Δ (inches)	Plastic Deflection Δ (inches)	Lateral Gage Position: (inches above grade)
-4.51	0.000	0.000	4.06	0.750		48
-7.39	0.000	0.000		0.250		~6
1.31	0.000	0.000	6.21	1.250	0.250	48
1.56	0.000	0.000		0.500	0.000	~6
Notes:			Notes:			

Terracon Rep: S.F. Paroski
 Location No.: PT 5-2
 Date: 9/3/2020

Pile Size: C8
 Driven Depth (in.): 72
 Time to Drive (sec.): 35

Load: Trackhoe

Axial Load Test			Lateral Load Test			
Axial Load Test (-Compression) (+Tension) (kip)	Elastic Deflection Δ (inches)	Plastic Deflection Δ (inches)	Lateral Load (kip)	Elastic Deflection Δ (inches)	Plastic Deflection Δ (inches)	Lateral Gage Position: (inches above grade)
-5.04	0.000	0.000	1.48	0.500		48
-9.49	0.000	0.000		0.250		~6
0.90	0.000	0.000	2.67	1.250	0.250	48
1.84	0.000	0.000		0.500	0.000	~6
Notes:			Notes:			



Pile Load Testing

Project: Dolores Canyon
 Project Number: 61205151

Terracon Rep: S.F. Paroski
 Location No.: PT 5-3
 Date: 9/1/2020

Pile Size: W8x10
 Driven Depth (in.): 72
 Time to Drive (sec.): 41

Load: Trackhoe

Axial Load Test			Lateral Load Test			
Axial Load Test (-Compression) (+Tension) (kip)	Elastic Deflection Δ (inches)	Plastic Deflection Δ (inches)	Lateral Load (kip)	Elastic Deflection Δ (inches)	Plastic Deflection Δ (inches)	Lateral Gage Position: (inches above grade)
-4.48	0.000	0.000	4.50	0.750		48
-7.55	0.000	0.000		0.250		~6
1.19	0.000	0.000	6.26	1.250	0.250	48
1.79	0.000	0.000		0.750	0.000	~6
Notes:			Notes:			

Terracon Rep: S.F. Paroski
 Location No.: PT 5-3
 Date: 9/1/2020

Pile Size: C8
 Driven Depth (in.): 72
 Time to Drive (sec.): 28

Load: Trackhoe

Axial Load Test			Lateral Load Test			
Axial Load Test (-Compression) (+Tension) (kip)	Elastic Deflection Δ (inches)	Plastic Deflection Δ (inches)	Lateral Load (kip)	Elastic Deflection Δ (inches)	Plastic Deflection Δ (inches)	Lateral Gage Position: (inches above grade)
-5.75	0.000	0.000	1.36	0.500		48
-10.09	0.000	0.000		0.250		~6
1.03	0.000	0.000	2.43	1.000	0.000	48
1.78	0.000	0.000		0.500	0.000	~6
Notes:			Notes:			



Pile Load Testing

Project: Dolores Canyon
 Project Number: 61205151

Terracon Rep: S.F. Paroski
 Location No.: PT 5-4
 Date: 9/1/2020

Pile Size: W8x10
 Driven Depth (in.): 72
 Time to Drive (sec.): 56

Load: Trackhoe

Axial Load Test			Lateral Load Test			
Axial Load Test (-Compression) (+Tension) (kip)	Elastic Deflection Δ (inches)	Plastic Deflection Δ (inches)	Lateral Load (kip)	Elastic Deflection Δ (inches)	Plastic Deflection Δ (inches)	Lateral Gage Position: (inches above grade)
-4.12	0.000	0.000	4.34	0.750		48
7.57	0.000	0.000		0.000		~6
0.75	0.000	0.000	6.86	1.250	0.250	48
2.10	0.000	0.000		0.750	0.000	~6
Notes:			Notes:			

Terracon Rep: S.F. Paroski
 Location No.: PT 5-4
 Date: 9/1/2020

Pile Size: C8
 Driven Depth (in.): 72
 Time to Drive (sec.): 29

Load: Trackhoe

Axial Load Test			Lateral Load Test			
Axial Load Test (-Compression) (+Tension) (kip)	Elastic Deflection Δ (inches)	Plastic Deflection Δ (inches)	Lateral Load (kip)	Elastic Deflection Δ (inches)	Plastic Deflection Δ (inches)	Lateral Gage Position: (inches above grade)
-5.84	0.000	0.000	1.48	0.500		48
-9.55	0.000	0.000		0.500		~6
1.04	0.000	0.000	2.49	1.000	0.000	48
1.76	0.000	0.000		0.500	0.000	~6
Notes:			Notes:			



Pile Load Testing

Project: Dolores Canyon
 Project Number: 61205151

Terracon Rep: S.F. Paroski
 Location No.: PT 5-5
 Date: 9/1/2020

Pile Size: W8x10
 Driven Depth (in.): 72
 Time to Drive (sec.): 67

Load: Trackhoe

Axial Load Test			Lateral Load Test			
Axial Load Test (-Compression) (+Tension) (kip)	Elastic Deflection Δ (inches)	Plastic Deflection Δ (inches)	Lateral Load (kip)	Elastic Deflection Δ (inches)	Plastic Deflection Δ (inches)	Lateral Gage Position: (inches above grade)
-3.94	0.000	0.000	4.23	0.750		48
-7.14	0.000	0.000		0.250		~6
0.85	0.000	0.000	6.32	1.250	0.250	48
2.42	0.000	0.000		0.500	0.000	~6
Notes:			Notes:			

Terracon Rep: S.F. Paroski
 Location No.: PT 5-5
 Date: 9/1/2020

Pile Size: C8
 Driven Depth (in.): 72
 Time to Drive (sec.): 31

Load: Trackhoe

Axial Load Test			Lateral Load Test			
Axial Load Test (-Compression) (+Tension) (kip)	Elastic Deflection Δ (inches)	Plastic Deflection Δ (inches)	Lateral Load (kip)	Elastic Deflection Δ (inches)	Plastic Deflection Δ (inches)	Lateral Gage Position: (inches above grade)
-5.45	0.000	0.000	1.15	0.250		48
-9.70	0.000	0.000		0.000		~6
0.93	0.000	0.000	2.82	1.000	0.000	48
1.92	0.000	0.000		0.500	0.000	~6
Notes:			Notes:			



Pile Load Testing

Project: Dolores Canyon
 Project Number: 61205151

Terracon Rep: S.F. Paroski
 Location No.: PT 5-6
 Date: 8/31/2020

Pile Size: W8x10
 Driven Depth (in.): 54
 Time to Drive (sec.): 77

Load: Trackhoe

Axial Load Test			Lateral Load Test			
Axial Load Test (-Compression) (+Tension) (kip)	Elastic Deflection Δ (inches)	Plastic Deflection Δ (inches)	Lateral Load (kip)	Elastic Deflection Δ (inches)	Plastic Deflection Δ (inches)	Lateral Gage Position: (inches above grade)
-4.22	0.000	0.000	4.57	1.000		48
-7.40	0.000	0.000		0.250		~6
1.11	0.000	0.000	6.59	1.500	0.500	48
1.72	0.000	0.000		0.500	0.000	~6
Notes:			Notes:			

Terracon Rep: S.F. Paroski
 Location No.: PT 5-6
 Date: 8/31/2020

Pile Size: C8
 Driven Depth (in.): 54
 Time to Drive (sec.): 50

Load: Trackhoe

Axial Load Test			Lateral Load Test			
Axial Load Test (-Compression) (+Tension) (kip)	Elastic Deflection Δ (inches)	Plastic Deflection Δ (inches)	Lateral Load (kip)	Elastic Deflection Δ (inches)	Plastic Deflection Δ (inches)	Lateral Gage Position: (inches above grade)
-4.92	0.000	0.000	1.19	0.250		48
-9.57	0.000	0.000		0.250		~6
1.55	0.000	0.000	2.45	1.000	0.250	48
2.03	0.000	0.000		0.250	0.000	~6
Notes:			Notes:			



Pile Load Testing

Project: Dolores Canyon
 Project Number: 61205151

Terracon Rep: S.F. Paroski
 Location No.: PT 5-7
 Date: 8/31/2020

Pile Size: W8x10
 Driven Depth (in.): 72
 Time to Drive (sec.): 36

Load: Trackhoe

Axial Load Test			Lateral Load Test			
Axial Load Test (-Compression) (+Tension) (kip)	Elastic Deflection Δ (inches)	Plastic Deflection Δ (inches)	Lateral Load (kip)	Elastic Deflection Δ (inches)	Plastic Deflection Δ (inches)	Lateral Gage Position: (inches above grade)
-3.96	0.000	0.000	4.38	0.625		48
-7.56	0.024	0.000		0.500		~6
0.77	0.000	0.000	6.30	1.125	0.625	48
1.50	0.000	0.000		1.000	0.000	~6
Notes:			Notes:			

Terracon Rep: S.F. Paroski
 Location No.: PT 5-7
 Date: 8/31/2020

Pile Size: C8
 Driven Depth (in.): 72
 Time to Drive (sec.): 23

Load: Trackhoe

Axial Load Test			Lateral Load Test			
Axial Load Test (-Compression) (+Tension) (kip)	Elastic Deflection Δ (inches)	Plastic Deflection Δ (inches)	Lateral Load (kip)	Elastic Deflection Δ (inches)	Plastic Deflection Δ (inches)	Lateral Gage Position: (inches above grade)
-5.22	0.000	0.000	1.30	0.500		48
-9.68	0.028	0.000		0.250		~6
1.11	0.000	0.000	2.41	1.000	0.250	48
2.01	0.000	0.000		0.500	0.000	~6
Notes:			Notes:			



Pile Load Testing

Project: Dolores Canyon
 Project Number: 61205151

Terracon Rep: S.F. Paroski
 Location No.: PT 5-8
 Date: 8/31/2020

Pile Size: W8x10
 Driven Depth (in.): 72
 Time to Drive (sec.): 47

Load: Trackhoe

Axial Load Test			Lateral Load Test			
Axial Load Test (-Compression) (+Tension) (kip)	Elastic Deflection Δ (inches)	Plastic Deflection Δ (inches)	Lateral Load (kip)	Elastic Deflection Δ (inches)	Plastic Deflection Δ (inches)	Lateral Gage Position: (inches above grade)
-3.65	0.000	0.000	4.23	0.750		48
-7.30	0.000	0.000		0.250		~6
0.93	0.000	0.000	6.49	1.250	0.250	48
1.71	0.000	0.000		0.500	0.000	~6
Notes:			Notes:			

Terracon Rep: S.F. Paroski
 Location No.: PT 5-8
 Date: 8/31/2020

Pile Size: C8
 Driven Depth (in.): 72
 Time to Drive (sec.): 35

Load: Trackhoe

Axial Load Test			Lateral Load Test			
Axial Load Test (-Compression) (+Tension) (kip)	Elastic Deflection Δ (inches)	Plastic Deflection Δ (inches)	Lateral Load (kip)	Elastic Deflection Δ (inches)	Plastic Deflection Δ (inches)	Lateral Gage Position: (inches above grade)
-4.75	0.000	0.000	1.56	0.375		48
-9.61	0.000	0.000		0.000		~6
0.92	0.000	0.000	2.29	1.000	0.000	48
2.26	0.000	0.000		0.250	0.000	~6
Notes:			Notes:			



Pile Load Testing

Project: Dolores Canyon
 Project Number: 61205151

Terracon Rep: S.F. Paroski
 Location No.: PT 5-9
 Date: 8/31/2020

Pile Size: W8x10
 Driven Depth (in.): 72
 Time to Drive (sec.): 85

Load: Trackhoe

Axial Load Test			Lateral Load Test			
Axial Load Test (-Compression) (+Tension) (kip)	Elastic Deflection Δ (inches)	Plastic Deflection Δ (inches)	Lateral Load (kip)	Elastic Deflection Δ (inches)	Plastic Deflection Δ (inches)	Lateral Gage Position: (inches above grade)
-4.30	0.000	0.000	4.60	0.750		48
-7.64	0.000	0.000		0.250		~6
0.92	0.000	0.000	6.20	1.250	0.250	48
1.52	0.000	0.000		0.500	0.000	~6
Notes:			Notes:			

Terracon Rep: S.F. Paroski
 Location No.: PT 5-9
 Date: 8/31/2020

Pile Size: C8
 Driven Depth (in.): 72
 Time to Drive (sec.): 67

Load: Trackhoe

Axial Load Test			Lateral Load Test			
Axial Load Test (-Compression) (+Tension) (kip)	Elastic Deflection Δ (inches)	Plastic Deflection Δ (inches)	Lateral Load (kip)	Elastic Deflection Δ (inches)	Plastic Deflection Δ (inches)	Lateral Gage Position: (inches above grade)
-5.01	0.000	0.000	1.34	0.500		48
-9.58	0.028	0.000		0.250		~6
0.92	0.000	0.000	2.38	1.000	0.000	48
2.10	0.000	0.000		0.500	0.000	~6
Notes:			Notes:			



Pile Load Testing

Project: Dolores Canyon
 Project Number: 61205151

Terracon Rep: S.F. Paroski
 Location No.: PT 5-10
 Date: 8/31/2020

Pile Size: W8x10
 Driven Depth (in.): 72
 Time to Drive (sec.): 50

Load: Trackhoe

Axial Load Test			Lateral Load Test			
Axial Load Test (-Compression) (+Tension) (kip)	Elastic Deflection Δ (inches)	Plastic Deflection Δ (inches)	Lateral Load (kip)	Elastic Deflection Δ (inches)	Plastic Deflection Δ (inches)	Lateral Gage Position: (inches above grade)
-4.99	0.000	0.000	4.46	0.500		48
-8.06	0.000	0.000		0.250		~6
0.83	0.000	0.000	6.03	1.000	0.250	48
1.61	0.000	0.000		0.500	0.000	~6
Notes:			Notes:			

Terracon Rep: S.F. Paroski
 Location No.: PT 5-10
 Date: 8/31/2020

Pile Size: C8
 Driven Depth (in.): 72
 Time to Drive (sec.): 58

Load: Trackhoe

Axial Load Test			Lateral Load Test			
Axial Load Test (-Compression) (+Tension) (kip)	Elastic Deflection Δ (inches)	Plastic Deflection Δ (inches)	Lateral Load (kip)	Elastic Deflection Δ (inches)	Plastic Deflection Δ (inches)	Lateral Gage Position: (inches above grade)
-5.29	0.000	0.000	1.37	0.500		48
-9.73	0.000	0.000		0.250		~6
0.88	0.000	0.000	2.42	0.750	0.000	48
1.81	0.000	0.000		0.250	0.000	~6
Notes:			Notes:			



Pile Load Testing

Project: Dolores Canyon
 Project Number: 61205151

Terracon Rep: S.F. Paroski
 Location No.: PT 5-11
 Date: 9/1/2020

Pile Size: W8x10
 Driven Depth (in.): 72
 Time to Drive (sec.): 40

Load: Trackhoe

Axial Load Test			Lateral Load Test			
Axial Load Test (-Compression) (+Tension) (kip)	Elastic Deflection Δ (inches)	Plastic Deflection Δ (inches)	Lateral Load (kip)	Elastic Deflection Δ (inches)	Plastic Deflection Δ (inches)	Lateral Gage Position: (inches above grade)
-4.00	0.000	0.000	4.59	1.000		48
-7.06	0.000	0.000		0.250		~6
0.95	0.000	0.000	6.10	1.250	0.250	48
1.64	0.000	0.000		0.750	0.000	~6
Notes:			Notes:			

Terracon Rep: S.F. Paroski
 Location No.: PT 5-11
 Date: 9/1/2020

Pile Size: C8
 Driven Depth (in.): 72
 Time to Drive (sec.): 27

Load: Trackhoe

Axial Load Test			Lateral Load Test			
Axial Load Test (-Compression) (+Tension) (kip)	Elastic Deflection Δ (inches)	Plastic Deflection Δ (inches)	Lateral Load (kip)	Elastic Deflection Δ (inches)	Plastic Deflection Δ (inches)	Lateral Gage Position: (inches above grade)
-5.30	0.000	0.000	1.23	0.500		48
-9.65	0.020	0.000		0.000		~6
0.95	0.000	0.000	2.48	1.000	0.250	48
1.82	0.000	0.000		0.500	0.000	~6
Notes:			Notes:			



Pile Load Testing

Project: Dolores Canyon
 Project Number: 61205151

Terracon Rep: S.F. Paroski
 Location No.: PT 5-12
 Date: 9/1/2020

Pile Size: W8x10
 Driven Depth (in.): 72
 Time to Drive (sec.): 95

Load: Trackhoe

Axial Load Test			Lateral Load Test			
Axial Load Test (-Compression) (+Tension) (kip)	Elastic Deflection Δ (inches)	Plastic Deflection Δ (inches)	Lateral Load (kip)	Elastic Deflection Δ (inches)	Plastic Deflection Δ (inches)	Lateral Gage Position: (inches above grade)
-4.15	0.000	0.000	4.39	0.750		48
-7.43	0.000	0.000		0.250		~6
1.09	0.000	0.000	6.30	1.250	0.250	48
1.74	0.000	0.000		0.250	0.000	~6
Notes:			Notes:			

Terracon Rep: S.F. Paroski
 Location No.: PT 5-12
 Date: 9/1/2020

Pile Size: C8
 Driven Depth (in.): 72
 Time to Drive (sec.): 100

Load: Trackhoe

Axial Load Test			Lateral Load Test			
Axial Load Test (-Compression) (+Tension) (kip)	Elastic Deflection Δ (inches)	Plastic Deflection Δ (inches)	Lateral Load (kip)	Elastic Deflection Δ (inches)	Plastic Deflection Δ (inches)	Lateral Gage Position: (inches above grade)
-5.37	0.000	0.000	1.52	0.625		48
-9.66	0.000	0.000		0.250		~6
1.14	0.000	0.000	2.38	1.125	0.500	48
2.41	0.000	0.000		0.500	0.000	~6
Notes:			Notes:			



Pile Load Testing

Project: Dolores Canyon
 Project Number: 61205151

Terracon Rep: S.F. Paroski
 Location No.: PT 5-13
 Date: 9/1/2020

Pile Size: W8x10
 Driven Depth (in.): 72
 Time to Drive (sec.): 62

Load: Trackhoe

Axial Load Test			Lateral Load Test			
Axial Load Test (-Compression) (+Tension) (kip)	Elastic Deflection Δ (inches)	Plastic Deflection Δ (inches)	Lateral Load (kip)	Elastic Deflection Δ (inches)	Plastic Deflection Δ (inches)	Lateral Gage Position: (inches above grade)
-5.20	0.000	0.000	4.14	0.750		48
-7.48	0.000	0.000		0.250		~6
0.87	0.000	0.000	6.16	1.250	0.250	48
1.80	0.000	0.000		0.500	0.000	~6
Notes:			Notes:			

Terracon Rep: S.F. Paroski
 Location No.: PT 5-13
 Date: 9/1/2020

Pile Size: C8
 Driven Depth (in.): 72
 Time to Drive (sec.): 29

Load: Trackhoe

Axial Load Test			Lateral Load Test			
Axial Load Test (-Compression) (+Tension) (kip)	Elastic Deflection Δ (inches)	Plastic Deflection Δ (inches)	Lateral Load (kip)	Elastic Deflection Δ (inches)	Plastic Deflection Δ (inches)	Lateral Gage Position: (inches above grade)
-5.15	0.000	0.000	1.17	0.500		48
-9.64	0.000	0.000		0.000		~6
1.13	0.000	0.000	2.56	1.250	0.250	48
1.77	0.000	0.000		0.250	0.000	~6
Notes:			Notes:			



Pile Load Testing

Project: Dolores Canyon
 Project Number: 61205151

Terracon Rep: S.F. Paroski
 Location No.: PT 5-14
 Date: 9/2/2020

Pile Size: W8x10
 Driven Depth (in.): 72
 Time to Drive (sec.): 43

Load: Trackhoe

Axial Load Test			Lateral Load Test			
Axial Load Test (-Compression) (+Tension) (kip)	Elastic Deflection Δ (inches)	Plastic Deflection Δ (inches)	Lateral Load (kip)	Elastic Deflection Δ (inches)	Plastic Deflection Δ (inches)	Lateral Gage Position: (inches above grade)
-3.62	0.000	0.000	4.28	0.750		48
-7.79	0.000	0.000		0.250		~6
1.16	0.000	0.000	6.10	1.000	0.000	48
2.02	0.000	0.000		0.500	0.000	~6
Notes:			Notes:			

Terracon Rep: S.F. Paroski
 Location No.: PT 5-14
 Date: 9/2/2020

Pile Size: C8
 Driven Depth (in.): 72
 Time to Drive (sec.): 31

Load: Trackhoe

Axial Load Test			Lateral Load Test			
Axial Load Test (-Compression) (+Tension) (kip)	Elastic Deflection Δ (inches)	Plastic Deflection Δ (inches)	Lateral Load (kip)	Elastic Deflection Δ (inches)	Plastic Deflection Δ (inches)	Lateral Gage Position: (inches above grade)
-4.79	0.000	0.000	1.38	0.500		48
-9.65	0.000	0.000		0.000		~6
0.97	0.000	0.000	2.46	0.750	0.000	48
1.83	0.000	0.000		0.250	0.000	~6
Notes:			Notes:			



Pile Load Testing

Project: Dolores Canyon
 Project Number: 61205151

Terracon Rep: S.F. Paroski
 Location No.: PT 5-15
 Date: 9/2/2020

Pile Size: W8x10
 Driven Depth (in.): 72
 Time to Drive (sec.): 52

Load: Trackhoe

Axial Load Test			Lateral Load Test			
Axial Load Test (-Compression) (+Tension) (kip)	Elastic Deflection Δ (inches)	Plastic Deflection Δ (inches)	Lateral Load (kip)	Elastic Deflection Δ (inches)	Plastic Deflection Δ (inches)	Lateral Gage Position: (inches above grade)
-3.76	0.000	0.000	4.19	0.500		48
-7.36	0.000	0.000		0.250		~6
0.95	0.000	0.000	6.11	1.000	0.000	48
1.76	0.000	0.000		0.500	0.000	~6
Notes:			Notes:			

Terracon Rep: S.F. Paroski
 Location No.: PT 5-15
 Date: 9/2/2020

Pile Size: C8
 Driven Depth (in.): 72
 Time to Drive (sec.): 36

Load: Trackhoe

Axial Load Test			Lateral Load Test			
Axial Load Test (-Compression) (+Tension) (kip)	Elastic Deflection Δ (inches)	Plastic Deflection Δ (inches)	Lateral Load (kip)	Elastic Deflection Δ (inches)	Plastic Deflection Δ (inches)	Lateral Gage Position: (inches above grade)
-4.84	0.000	0.000	1.14	0.500		48
-9.73	0.000	0.000		0.250		~6
1.02	0.000	0.000	2.72	1.000	0.000	48
1.92	0.000	0.000		0.500	0.000	~6
Notes:			Notes:			