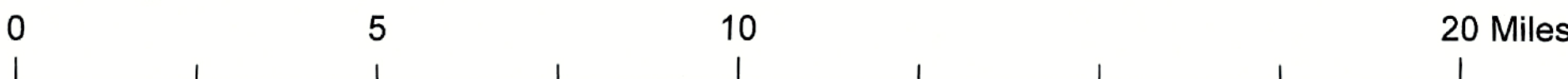
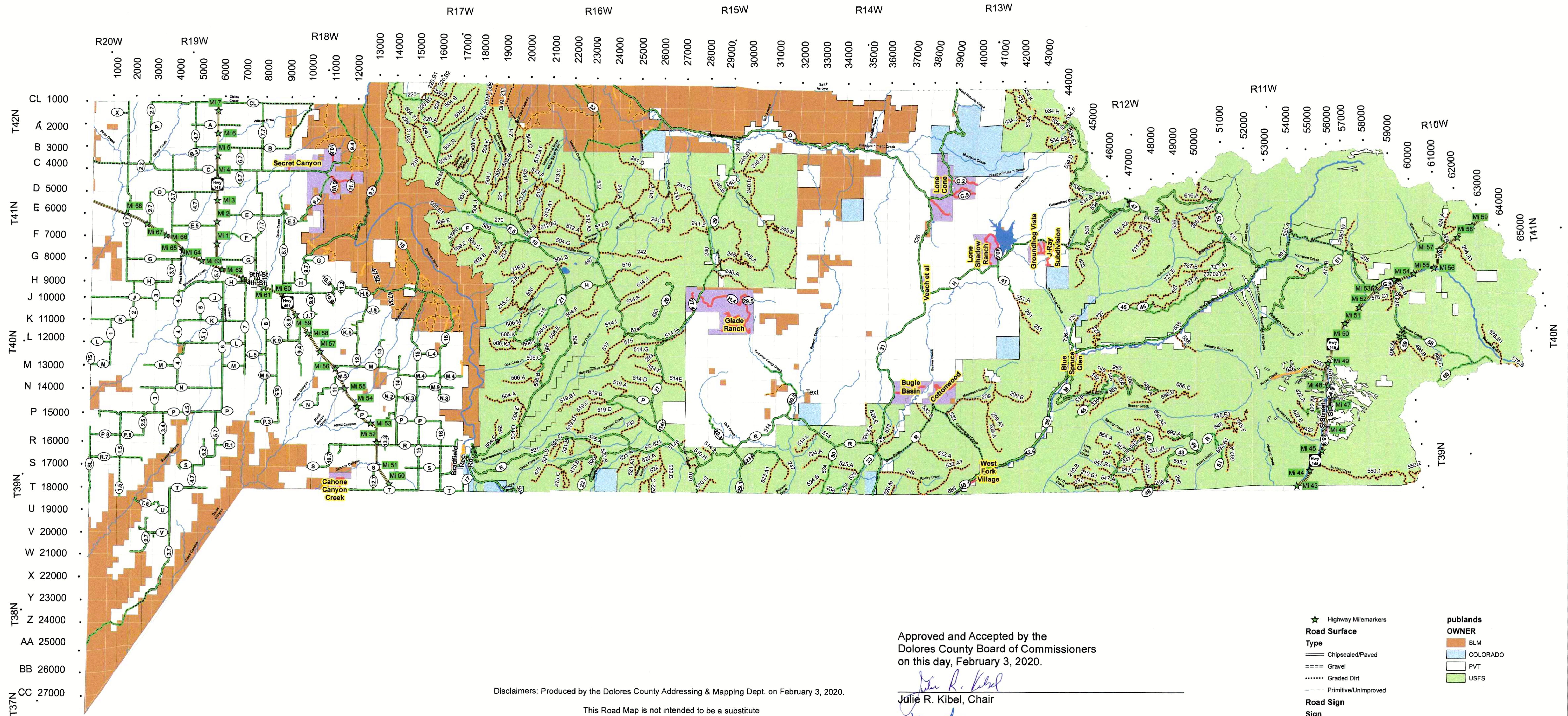


2020 Dolores County Map



Disclaimers: Produced by the Dolores County Addressing & Mapping Dept. on February 3, 2020.

This Road Map is not intended to be a substitute for surveys in determining property boundaries.

There may be public roads, public rights-of-way, and public easements not identified on this map. This map shall not be interpreted to restrict or in any way limit the Dolores County Board of Commissioners from recognizing such public roads, public rights-of-way, or public easements including, but not limited to, R.S. 2477 claim, or other legal assertion. Rights-of-ways are 60 feet unless varied by the Board of County Commissioners.

Please contact Local Agencies to determine if a road is open for public use.

NOTE: Dolores County addresses increase from north to south and west to east. Addresses along state highways are addressed according to the closest mile marker.

Approved and Accepted by the Dolores County Board of Commissioners on this day, February 3, 2020.

Julie R. Kibel
Julie R. Kibel, Chair

Steve Garchar
Steve Garchar

Floyd L. Cook
Floyd L. Cook

Steve Davis
Steve Davis, Road Supervisor

Lana Hancock
Lana Hancock, Deputy Clerk

- ★ Highway Milemarkers
- Road Surface**
- Type
 - Chipsealed/Paved
 - - - Gravel
 - Graded Dirt
 - - - - Primitive/Unimproved
- Road Sign**
- Sign
 - Dolores County
 - Non-Dolores County Owned or Maintained
 - Non-Dolores County Jurisdiction
 - City Maintained
 - Highway/CDOT
 - DoloresCounty_Subdivisions
 - lakes
 - Dolores Streams
 - Address_Grid_Points
 - River
- publands OWNER**
- BLM
- COLORADO
- PVT
- USFS